

Klingande Partitur

# TOM DOOLEY

Sida 1/2

(Diffast ursprung genom the Kingston Trio. Arr: Dicken Hedrenius.)

violin  
viola (finns utskrivet i g-klav och altklav)

S  
T  
R  
A  
K  
(unis)

Violin and Viola staves with notes and rests.

cello  
kontrabas

Cello and Double Bass staves with notes and rests.

flöjt + klockspel

B

Flute and Glockenspiel staff with notes and rests.

L

trp/kl/ss

Trumpet, Clarinet, and Saxophone staff with notes and rests.

A

altsax

Alto Saxophone staff with notes and rests.

S

trb/ta

Trumpet and Trombone staff with notes and rests.

Piano

Piano staff with notes and rests.

bas

(pizz.)

Bass staff with notes and rests.

BAS: (man kan ta halvnoter istället)

trum.

Drum staff with rhythmic notation (x marks).

(Swing-komp)

G F#7/D G G F#7/D Am D7

## FORM

(ackord som Rudolf med röda mulen)

Tips: man kan ev. (muntligt?) senare lägga insatsen i takt 2 till taktens andra fjärdedel

- 2 ggr blås
  - 2 ggr stråk
  - 2 ggr piano
  - 2 ggr Alla
- (Bas + trummor: spela alla gånger)

OBS!  
FORM EJ ANGIVEN I STÄMMORNA

# TOM DOOLEY

sida 2/2

STRÖRK

flöjt + klackspel

B

tr/kl

A

S

altsax

trb/tu

Piand

bas

(sista: fermat)

trum

Am C#% Am D7 Am C#% D7<sup>ts</sup> G<sup>b</sup>

(trummor: sista takten i sista versen: ta cymbalslag på ettan)

# TOM DOOLEY

## VIOLIN

Handwritten musical notation for Violin, consisting of four staves. The key signature is G major (one sharp) and the time signature is common time (C). The notation includes quarter notes, eighth notes, and a half note, with some notes beamed together. There are some scribbles and corrections in the first two staves.

## VIOLA

Handwritten musical notation for Viola, consisting of four staves. The key signature is G major (one sharp) and the time signature is common time (C). The notation includes quarter notes, eighth notes, and a half note, with some notes beamed together. There are some scribbles and corrections in the first two staves.

# Tom DOOLEY

## CELLO OCH KONTRABAS ARCO

Handwritten musical notation for Cello and Double Bass Arco. It consists of four staves in bass clef with a key signature of one sharp (F#) and a common time signature (C). The first staff shows a sequence of notes: G2, A2, B2, C3, D3, E3, F#3, G3. The second and third staves show the same sequence with a fermata over the final G3. The fourth staff shows the sequence with a fermata over the final G3 and a double bar line at the end.

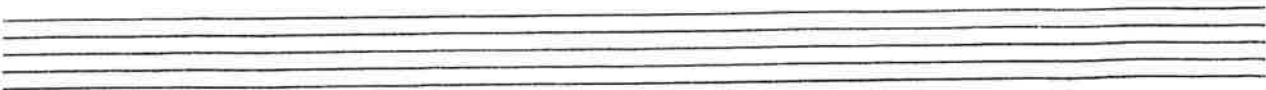
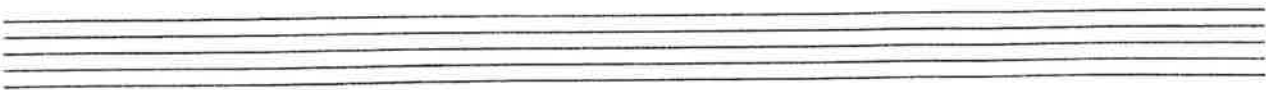
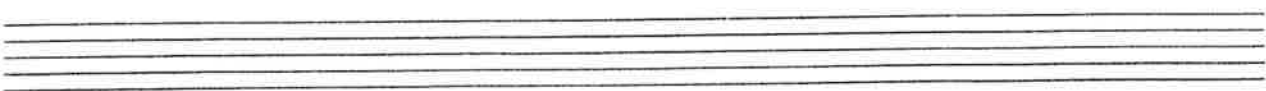
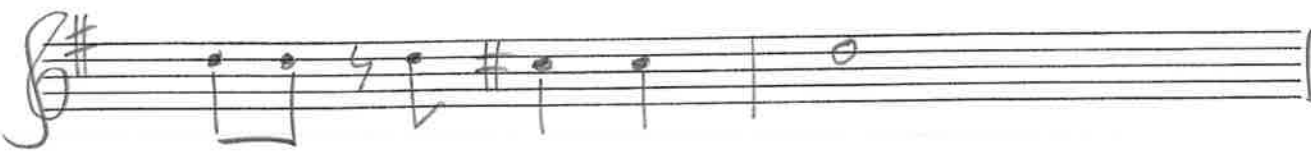
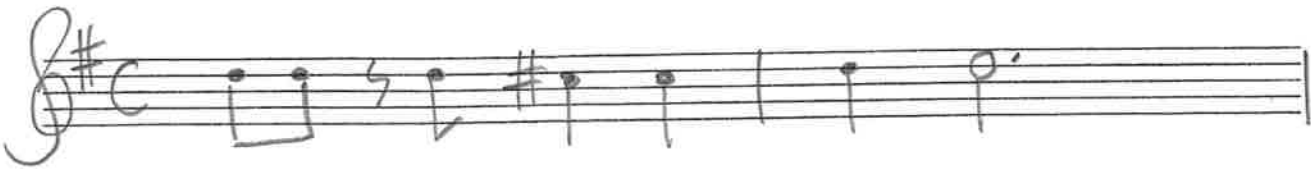
## KONTRABAS PIZZICATO (man kan ta halvnoter istället)

Handwritten musical notation for Double Bass Pizzicato. It consists of four staves in bass clef with a key signature of one sharp (F#) and a common time signature (C). The first staff shows a sequence of notes: G2, A2, B2, C3, D3, E3, F#3, G3. The second and third staves show the same sequence with a fermata over the final G3. The fourth staff shows the sequence with a fermata over the final G3 and a double bar line at the end.

↑  
(Sluta på långt G)  
(sista versen)

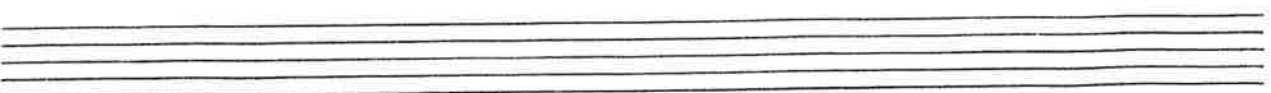
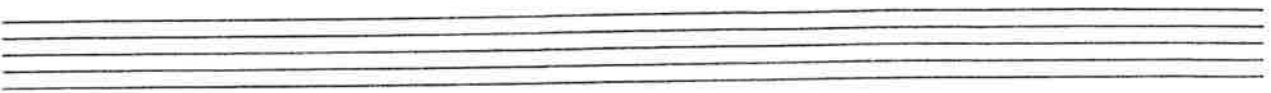
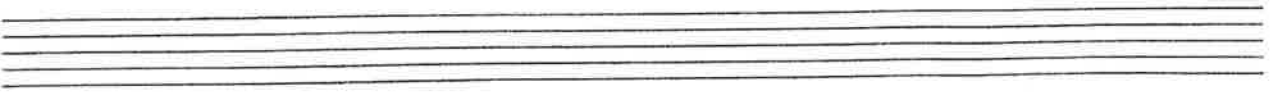
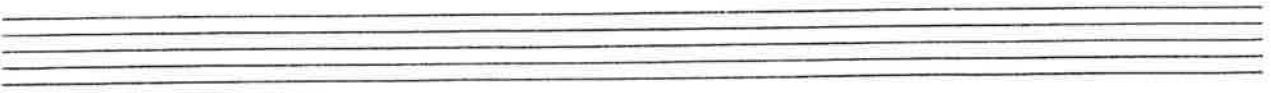
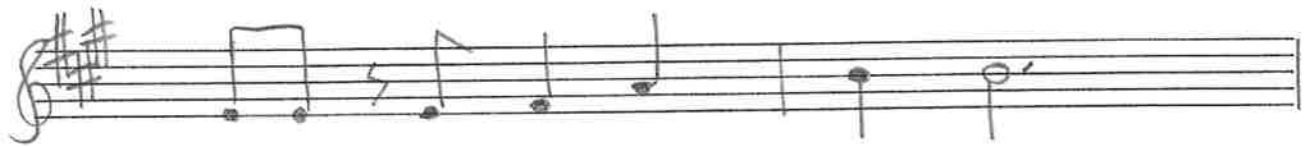
FLÖJT  
KLOCKSPÄL

TOM DOOLEY



TRUMPET  
KLARINETT  
SOPRANSAXOFON

TOM DOOLEY



TROMBON  
BARYTONTUBA

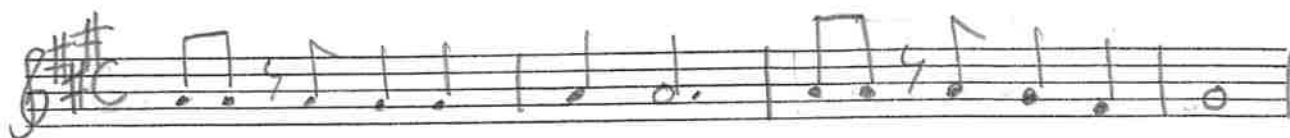
# TOM DOOLEY



TONERNA:



Samma stämman i B<sup>b</sup>-transponering:



Altsaxofon

TOM DOOLEY

The first system of handwritten musical notation consists of four staves. Each staff begins with a treble clef, a key signature of three sharps (F#, C#, G#), and a common time signature (C). The notation is as follows:

- Staff 1: A quarter note G4, a quarter note A4, a quarter note B4, a quarter note C5, a quarter note B4, a quarter note A4, a quarter note G4.
- Staff 2: A quarter note G4, a quarter note A4, a quarter note B4, a quarter note C5, a quarter note B4, a quarter note A4, a quarter note G4.
- Staff 3: A quarter note G4, a quarter note A4, a quarter note B4, a quarter note C5, a quarter note B4, a quarter note A4, a quarter note G4.
- Staff 4: A quarter note G4, a quarter note A4, a quarter note B4, a quarter note C5, a quarter note B4, a quarter note A4, a quarter note G4.

Five empty musical staves are provided for further notation, each consisting of five horizontal lines.



piano

TOM DOOLEY

Handwritten musical notation for the piece "Tom Dooley". The score is written in G major (one sharp) and common time (C). It consists of four staves of music. The first staff begins with a treble clef, a key signature of one sharp (F#), and a common time signature (C). The melody starts with a quarter note G4, followed by a quarter note A4, a quarter note B4, and a quarter note C5. A fermata is placed over the first two notes. The melody continues with a quarter note B4, a quarter note A4, and a quarter note G4. The piece concludes with a final chord consisting of G4, B4, and D5. The second, third, and fourth staves provide accompaniment, each starting with a treble clef and a key signature of one sharp. The second staff has a fermata over the first two notes. The third staff has a fermata over the first two notes. The fourth staff has a fermata over the first two notes.

Trumset

Tom DOOLEY

( $\uparrow \downarrow \uparrow$ )  
( $\uparrow = \downarrow \uparrow$ )

Swing

Bass clef notation with a 4/4 time signature. The first measure contains a series of notes with 'x' marks above them, indicating a drum pattern. Above the notes are some handwritten annotations: a circled 'o', a plus sign, and a circled 'o'. The notation continues with a slash through the staff, indicating a continuation of the pattern.

Empty musical staff with a slash through the staff, indicating a continuation of the drum pattern.

Empty musical staff with a slash through the staff, indicating a continuation of the drum pattern.

Empty musical staff with a slash through the staff, indicating a continuation of the drum pattern.



Sista versen:  
sluta på cymbalslag  
på ettan

Empty musical staff.

Empty musical staff.

Empty musical staff.