

SLEEP OVER

Långsamt och lugnt
jämnåttöndelar

OPTIONALS:

Flöjt dubblar trumpet 1 (men tacet 1st X)

Violin dubblar trumpet 2 (men tacet 1st X)

Trumpet kan ersättas av optionalinstrument

Altsax

Tacet 1st X

Tensax

Tacet 1st X

Barsax

Tacet 1st X

Trumpet 1

Trumpet 2

Trombon

Tacet 1st X

Bas

Bbm Fm

Alt

Trp 1

Trp 2

Trombon

Bas

Bbm Fm G7 C7 F7 Bb7 Ebm7 Ebm6

Alt

Musical score for the first system, featuring Tenor, Baritone, Trumpet 1, Trumpet 2, Trombone, and Bass parts. The key signature is three flats (B-flat major/C minor). The bass line includes the following chord changes: Bb/F, Bb/F, Fdim C7/E, Ebm, Fmaj7, Db7, Ab/Eb, Ab+/Eb, and Db/F, Gb7.

Alt

Musical score for the second system, continuing the instrumental parts from the first system. The bass line includes the following chord changes: Cm, C7, Db, Ddim, Ab/Eb, F9, E9, Bbm7Eb1, Fm, C7#9, Fm, and Fm.

FLÖJT
(= Trp 1)

SLEEP OVER

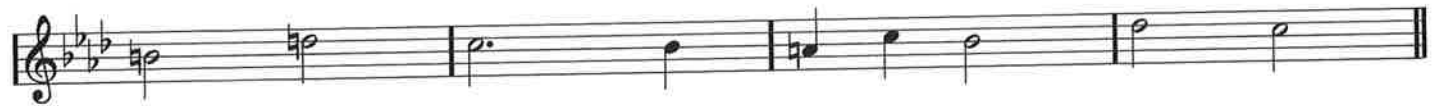
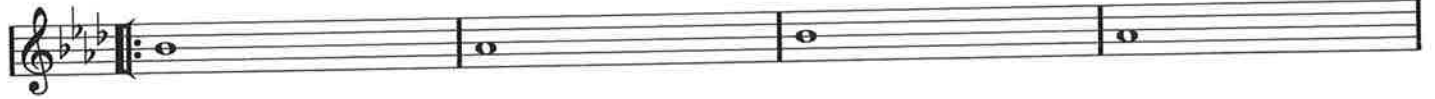
DDDD

jämna åttondelar

LEAD TACET



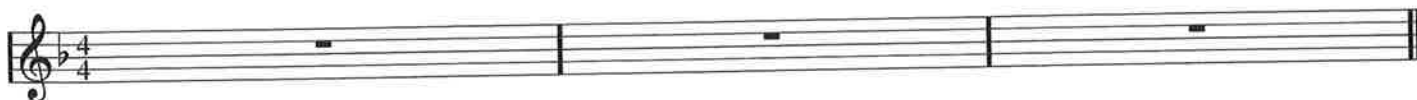
TACET 1st X



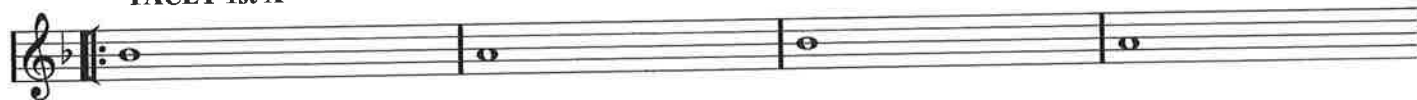
SLEEP OVER

DDDD

Altsax



TACET 1st X



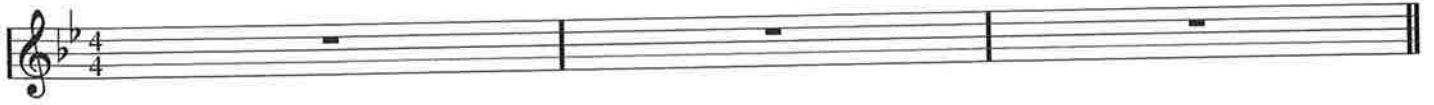
LEAD



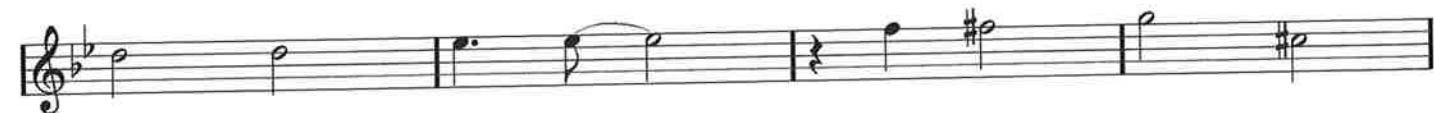
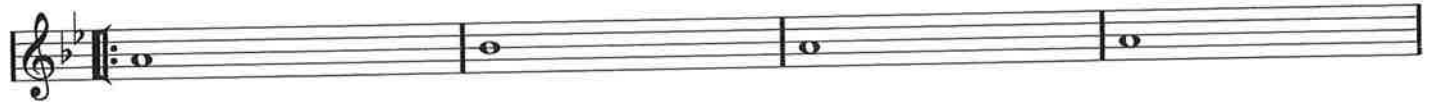
SLEEP OVER

DDDD

Tenorsax



TACET 1st X



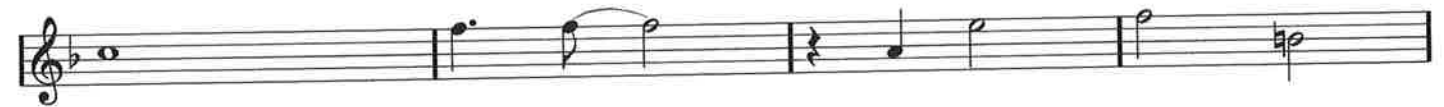
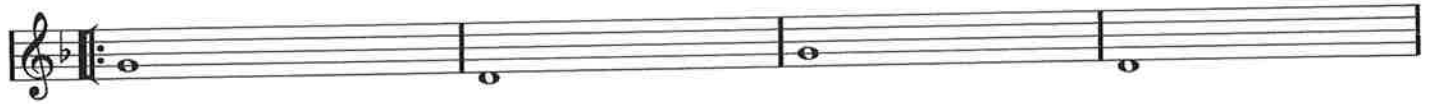
SLEEP OVER

DDDD

Barytonsax



TACET 1st X



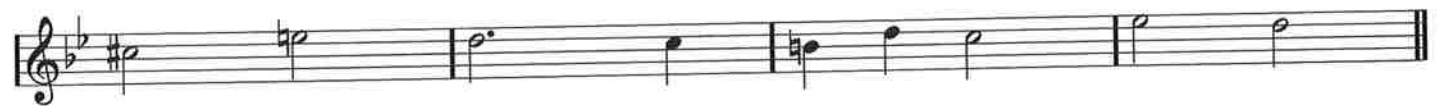
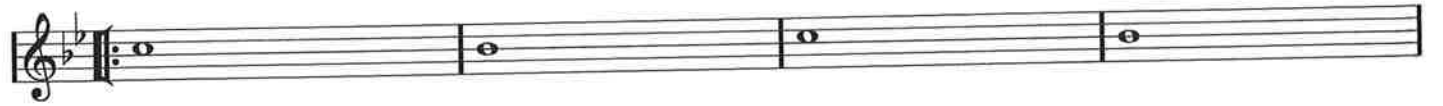
SLEEP OVER

Trumpet 1

DDDD

jämna åttondelar

LEAD



Trumpet 2

SLEEP OVER

DDDD

jämna åttondelar



opt trumpet 3

- SLEEP OVER -

Bas (långsamt, lugnt)

(Som trumstämman: kompa när basen spelar)

SLEEP OVER

DDDD

