

Easy To Love

Cole Porter (arr Dicken 230129) sid 1/2

INTRO

TEMA (lead)

A Bm⁷ F#⁷ Bm⁷ E⁷ Amaj⁷ D⁷ C#m⁷ F#⁷

Bm⁷ E⁷ Amaj⁷ Bm⁷ C#m⁷ F#⁷ Bm⁷ E⁷

Amaj⁷ Bm⁷ C#m⁷ Cm⁷ Bm⁷ C#m⁷(b5) F#⁷ Bm⁷ E⁷

Amaj⁷ D⁷ C#m⁷ F#⁷

Bm⁷ Dm⁶ Amaj⁷ Bm⁷ C#m⁷ C^o Bm⁷ E⁷

SOLODEL (kan hoppas över).
 Unis bakgrund/ens. efter behag (gärna ackordstoner på toptonerna!)

B Bm⁷ C#m⁷(b5) F#⁷ Bm⁷ E⁷

Solobreak el. trumbreak

Amaj⁷ D⁷ C#m⁷ F#⁷

Bm⁷ E⁷ Amaj⁷ C#m⁷ F#⁷ Bm⁷ E⁷ Amaj⁷ C#m⁷ Cm⁷

Altsaxofon - Easy To Love

Bm⁷ C#m⁷(b5) F#⁷ Bm⁷ E⁷

Amaj⁷ D⁷ C#m⁷ F#⁷

Bm⁷ Dm⁷ Amaj⁷ Bm⁷ C#m⁷ C^o Bm⁷ E⁷ A C#m⁷ F#⁷

SLUT-TEMA

f

CODA

Tenorsaxofon

Easy To Love

Cole Porter (arr Dicken 230129) sid 1/2

INTRO

A TEMA (altsax)

SOLODEL (kan hoppas över).
Unis bakgrund/ens. efter behag (gärna ackordstoner på topp-tonerna!)

Solobreak el. trumbreak

B Em⁷ F#m⁷(b5) B⁷ Em⁷ A⁷

Dmaj⁷ G⁷ F#m⁷ B⁷

Em⁷ A⁷ Dmaj⁷ F#m⁷ B⁷ Em⁷ A⁷ Dmaj⁷ F#m⁷Fm⁷

Tenorsaxofon - Easy To Love

Em⁷ F#m^{7(b5)} B⁷ Em⁷ A⁷

Dmaj⁷ G⁷ F#m⁷ B⁷

Em⁷ Gm⁷ Dmaj⁷ Em⁷ F#m⁷ F^o Em⁷ A⁷ D F#m⁷ B⁷

C SLUT-TEMA

f

CODA

3

Trumpet

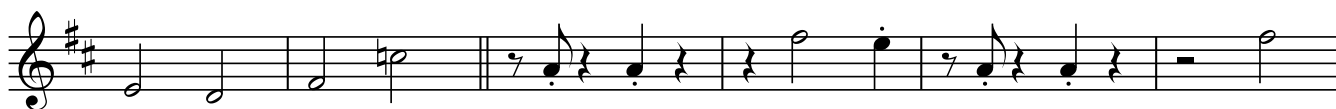
Easy To Love

Cole Porter (arr Dicken 230129) sid 1/2

INTRO



A TEMA (altsax)



SOLODEL (kan hoppas över).
Unis bakgrund / ens. efter behag (gärna ackordstoner på topp-tonerna!)

Solobreak el. trumbreak

B Em⁷ F#m⁷(b5) B⁷ Em⁷ A⁷



Dmaj⁷

G⁷

F#m⁷

B⁷



Em⁷

A⁷

Dmaj⁷

F#m⁷

B⁷

Em⁷

A⁷

Dmaj⁷

F#m⁷ Fm⁷



Trumpet - Easy To Love

Em⁷ F#m⁷(b5) B⁷ Em⁷ A⁷

Dmaj⁷ G⁷ F#m⁷ B⁷

Em⁷ Gm⁷ Dmaj⁷ Em⁷ F#m⁷ F^o Em⁷ A⁷ D F#m⁷ B⁷

C SLUT-TEMA (lead)

f

CODA

3

3

Trombon

Easy To Love

Cole Porter (arr Dicken 230129) sid 1/2

INTRO

A TEMA (altsax)

SOLODEL (kan hoppas över).
Unis bakgrund / ens. efter behag (gärna ackordstoner på toppenerna!)

Solobreak el. trumbreak

B Dm⁷ Em^{7(b5)} A⁷ Dm⁷ G⁷

Cmaj⁷ F⁷ Em⁷ A⁷

Dm⁷ G⁷ Cmaj⁷ Em⁷ A⁷ Dm⁷ G⁷ Cmaj⁷ Em⁷ Ebm⁷

Trombon - Easy To Love

Chord progression for the first section:

Dm⁷ Em⁷(b5) A⁷ Dm⁷ G⁷

Cmaj⁷ F⁷ Em⁷ A⁷

Dm⁷ Fm⁷ Cmaj⁷ Dm⁷ Em⁷ Eb^o Dm⁷ G⁷ C Em⁷ A⁷

☐ SLUT-TEMA

Musical notation for the 'SLUT-TEMA' section, starting with a forte (*f*) dynamic marking.

CODA

Komp

Easy To Love

Cole Porter (arr Dicken 230129) sid 1/2

INTRO

F#m7(b5) F7 Em7(b5) A7 Ab13 G13 Ab13 G13

TEMA (altsax)

A Dm7 Em7(b5) A7 Dm7 G7 Cmaj7 F7 Em7 A7

Dm7 G7 Cmaj7 Dm7 Em7 A7 Dm7 G7 Cmaj7 Dm7 Em7 Ebm7

Dm7 Em7(b5) A7 Dm7 G7 Cmaj7 F7 Em7 A7

Dm7 Fm6 Cmaj7 Dm7 Em7 Eb° Dm7 Dm7 G7(b9)

SOLODEL (kan hoppas över).
Unis bakgrund/ens. efter behag

C Solobreak el. trumbreak **B** Dm7 Em7(b5) A7 Dm7 G7

Cmaj7 F7 Em7 A7

Dm7 G7 Cmaj7 Em7 A7 Dm7 G7 Cmaj7 Em7 Ebm7

Komp - Easy To Love

Dm⁷ Em^{7(b5)} A⁷ Dm⁷ G⁷
 Cmaj⁷ F⁷ Em⁷ A⁷
 Dm⁷ Fm⁷ Cmaj⁷ Dm⁷ Em⁷ Eb^o Dm⁷ G⁷ C Em⁷ A⁷

SLUT-TEMA

C Dm⁷ Em^{7(b5)} A⁷ Dm⁷ G⁷ Cmaj⁷ F⁷
 Em⁷ A^{7(b9)} Dm⁷ G⁷ Cmaj⁷ Dm⁷ A⁷/E A⁷
 Dm⁷ G⁷ Cmaj⁷ Em⁷ Ebm⁷
 Dm⁷ Em^{7(b5)} A⁷ Dm⁷ G⁷ Cmaj⁷ F⁷
 Em⁷ A^{7(b9)} Dm⁷ G⁷ Fm⁷ Bb⁷ Cmaj⁷ F⁷ Em⁷ Eb^o
 Dm⁷ G⁷ F#m⁷ F⁷ Em⁷ Eb^o BREAK Dm⁷
 CODA Db⁹ C⁶

Easy To Love

Cole Porter (arr Dicken 230129) *sid 1/2*

INTRO

Trumpet

Altsaxofon

Tenorsaxofon

Trombon

INTRO

INTRO

INTRO

INTRO

Komp

F#m7(b5) F7 Em7(b5) A7 Ab13 G13 Ab13 G13

The image shows a musical score for the song 'Easy To Love' by Cole Porter, arranged by Dicken 230129. The score is for the first side of the record (sid 1/2). It features five parts: Trumpet, Altsaxofon, Tenorsaxofon, Trombon, and Komp. Each part has an 'INTRO' section. The Komp part includes a chord progression: F#m7(b5), F7, Em7(b5), A7, Ab13, G13, Ab13, G13. The music is in 4/4 time and the key signature has one sharp (F#).

A

5 TEMA (altsax)

Trp

Trp staff with rests

Dm7 Em7(b5) A7 Dm7 G7 Cmaj7 F7

Alt

Alt staff with melody

TEMA (altsax)

Ten

Ten staff with bass line

TEMA (altsax)

Trb

Trb staff with bass line

A

TEMA (altsax)

Komp

Komp staff with melody

Dm7 Em7(b5) A7 Dm7 G7 Cmaj7 F7

11

Trp

Trp staff with rests

Em7 A7 Dm7 G7 Cmaj7 Dm7 Em7 A7

Alt

Alt staff with melody

Ten

Ten staff with bass line

Trb

Trb staff with bass line

Komp

Komp staff with melody

Em7 A7 Dm7 G7 Cmaj7 Dm7 Em7 A7

17

Trp

Alt

Ten

Trb

Komp

Dm⁷ G⁷ Cmaj⁷ Dm⁷ Em⁷ Ebm⁷ Dm⁷ Em⁷(b5) A⁷

23

Trp

Alt

Ten

Trb

Komp

Dm⁷ G⁷ Cmaj⁷ F⁷ Em⁷ A⁷

29

Trp

Alt

Ten

Trb

Komp

Dm⁷ Fm⁶ Cmaj⁷ Dm⁷ Em⁷ Eb^o

Dm⁷ Fm⁶ Cmaj⁷ Dm⁷ Em⁷ Eb^o

33

Trp

Alt

Ten

Trb

Komp

Solobreak el. trumbreak

Solobreak el. trumbreak

Solobreak el. trumbreak

Solobreak el. trumbreak

Solobreak el. trumbreak

Dm⁷ G⁷ C

Dm⁷ Dm⁷ G⁷(b⁹) C

Solobreak el. trumbreak

B SOLODEL (kan hoppas över).
Unis bakgrund/ ens. efter behag (gärna ackordstoner på topptonerna!)

37 Dm⁷ Em⁷(b5) A⁷ Dm⁷ G⁷ Cmaj⁷ F⁷

Trp

Dm⁷ Em⁷(b5) A⁷ Dm⁷ G⁷ Cmaj⁷ F⁷

SOLODEL (kan hoppas över).
Unis bakgrund/ ens. efter behag (gärna ackordstoner på topptonerna!)

Alt

SOLODEL (kan hoppas över).
Unis bakgrund/ ens. efter behag (gärna ackordstoner på topptonerna!)

Ten

SOLODEL (kan hoppas över).
Unis bakgrund/ ens. efter behag (gärna ackordstoner på topptonerna!)

Trb

Dm⁷ Em⁷(b5) A⁷ Dm⁷ G⁷ Cmaj⁷ F⁷

SOLODEL (kan hoppas över).
Unis bakgrund/ ens. efter behag

B Dm⁷ Em⁷(b5) A⁷ Dm⁷ G⁷ Cmaj⁷ F⁷

Komp

43 Em⁷ A⁷ Dm⁷ G⁷ Cmaj⁷ Em⁷ A⁷

Trp

Em⁷ A⁷ Dm⁷ G⁷ Cmaj⁷ Em⁷ A⁷

Alt

Em⁷ A⁷ Dm⁷ G⁷ Cmaj⁷ Em⁷ A⁷

Ten

Em⁷ A⁷ Dm⁷ G⁷ Cmaj⁷ Em⁷ A⁷

Trb

Em⁷ A⁷ Dm⁷ G⁷ Cmaj⁷ Em⁷ A⁷

Komp

49 Dm^7 G^7 $Cmaj^7$ Em^7 Ebm^7 Dm^7 $Em^7(b5)$ A^7

Trp

Alt

Ten

Trb

Komp

55 Dm^7 G^7 $Cmaj^7$ F^7

Trp

Alt

Ten

Trb

Komp

72

Trp

Alt

Ten

Trb

Komp

G⁷ Cmaj⁷ F⁷ Em⁷ A⁷(b⁹) Dm⁷

78

Trp

Alt

Ten

Trb

Komp

G⁷ Cmaj⁷ Dm⁷ A⁷/E A⁷ Dm⁷ G⁷ Cmaj⁷

84

Trp

Alt

Ten

Trb

Komp

Em⁷ Ebm⁷ Dm⁷ Em^{7(b5)} A⁷ Dm⁷ G⁷

89

Trp

Alt

Ten

Trb

Komp

Cmaj⁷ F⁷

91

Trp

Alt

Ten

Trb

Komp

Em⁷ A^{7(b9)} Dm⁷ G⁷ Fm⁷ Bb⁷ Cmaj⁷ F⁷ Em⁷ Eb^o

97

Trp

Alt

Ten

Trb

Komp

Dm⁷ G⁷ F#m⁷ F⁷ Em⁷ Eb^o BREAK Dm⁷

101 CODA

Trp

Alt

Ten

Trb

Komp

Chords: Db⁹, C⁶

Detailed description: This page of a musical score, numbered 11 in the top right corner, contains five staves for instruments: Trp (Trumpet), Alt (Alto Saxophone), Ten (Tenor Saxophone), Trb (Trombone), and Komp (Comps). The music is in 7/8 time and begins at measure 101, marked 'CODA'. Each instrument part starts with a triplet of eighth notes. The Trp part features a melodic line with a final triplet of eighth notes. The Alt part has a similar melodic line. The Ten part plays a bass line with a triplet of eighth notes. The Trb part has a bass line with a triplet of eighth notes. The Komp part has a bass line with a triplet of eighth notes and includes two chords: Db⁹ and C⁶, which are held over the final two measures of the CODA. The score concludes with a double bar line.