

# 58:th Street

Bobby Bryant

Trumsolo

Flöjt 1

Flöjt 2

Klarinett

Altklarinett

Altsaxofon

Tenorsaxofon

Trumpet 1

Trumpet 2

Trombon

Komp

The image shows a musical score for the piece "58:th Street" by Bobby Bryant. The score is arranged in a multi-staff format, with each instrument's part on a separate staff. The key signature is B-flat major (two flats) and the time signature is 4/4. The score is divided into four measures. The first three measures are marked "Trumsolo" and contain rests for all instruments. In the fourth measure, several instruments enter with melodic lines: Flöjt 1, Flöjt 2, Klarinett, Altklarinett, Altsaxofon, Tenorsaxofon, Trumpet 1, Trumpet 2, Trombon, and Komp. The Flöjt 1 and Flöjt 2 parts are in the treble clef, while the Klarinett, Altklarinett, Altsaxofon, Tenorsaxofon, Trombon, and Komp parts are in the bass clef. The Trumpet 1 and Trumpet 2 parts are in the treble clef. The score is written in a standard musical notation style with notes, rests, and bar lines.

A

5

Fl 1

Fl 2

Kl

Altkl

Altsax

Tensax

Trp 1

Trp 2

Trb

A

Gm

komp

9

Fl 1

Fl 2

Kl

Altkl

Altsax

Tensax

Trp 1

Trp 2

Trb

komp

F

Gm

Detailed description: This is a page of a musical score for measures 9 through 12. The score is for a brass and woodwind ensemble. The instruments listed are Flute 1 (Fl 1), Flute 2 (Fl 2), Clarinet (Kl), Alto Clarinet (Altkl), Alto Saxophone (Altsax), Tenor Saxophone (Tensax), Trumpet 1 (Trp 1), Trumpet 2 (Trp 2), Trombone (Trb), and Keyboard (komp). The music is written in 3/4 time with a key signature of two flats (B-flat and E-flat). The keyboard part includes chord markings 'F' and 'Gm'. The score shows various musical notations including notes, rests, and dynamic markings like 'v' (forte) and '7' (seventh). The measures are numbered 9, 10, 11, and 12.

13 **B**

Fl 1

Fl 2

Kl

Altkl

Altsax

Tensax

Trp 1

Trp 2

Trb

**B**  
D7(#9) Gm Dm7 Gm

komp

17

Fl 1

Fl 2

Kl

Altkl

Altsax

Tensax

Trp 1

Trp 2

Trb

komp

D7(#9) Gm D7(#9) Gm

Detailed description: This is a page of a musical score for a jazz ensemble, starting at measure 17. The score is written for ten instruments: Flute 1 and 2, Clarinet (Kl), Alto Clarinet (Altkl), Alto Saxophone (Altsax), Tenor Saxophone (Tensax), Trumpet 1 and 2, Trombone (Trb), and Piano (komp). The key signature is B-flat major (two flats). The piano part features a sequence of chords: D7(#9) in measures 17 and 19, and Gm in measures 18 and 20. The woodwind and brass parts have various melodic and harmonic lines, with some instruments playing rests in certain measures. The piano accompaniment provides a steady harmonic and rhythmic foundation.

C

(opt. 8:va)

21

Fl 1

Fl 2

Kl

Altkl

Altsax

Tensax

Trp 1

Trp 2

Trb

C

E<sup>b</sup>7

komp

27 **D**

Fl 1

Fl 2

(frivilligt)

Kl

Altkl

Altsax

Tensax

Trp 1

Trp 2

Trb

**D**  
D7 (endast blås och trummor)

komp

BREAK

31

Fl 1

Fl 2

Kl

Altkl

Altsax

Tensax

Trp 1

Trp 2

Trb

komp

(spela)

Bara piano (på temat)  
(men bara trummor och solist under solo) (alla)

BREAK



E

35

Fl 1

Fl 2

Kl

Altkl

Altsax

Tensax

Trp 1

Trp 2

Trb

E

Gm

komp

39

Fl 1

Fl 2

Kl

Altkl

Altsax

Tensax

Trp 1

Trp 2

Trb

komp

F

Gm

Detailed description: This page of a musical score covers measures 39 through 42. The instrumentation includes Flute 1, Flute 2, Clarinet 1, Clarinet 2, Alto Saxophone, Tenor Saxophone, Trumpet 1, Trumpet 2, Trombone, and Keyboard. The score is written in a key signature of two flats (B-flat and E-flat) and a common time signature. Measures 39 and 40 feature a complex rhythmic pattern with eighth and sixteenth notes, often beamed together. Measures 41 and 42 show a change in the melodic and harmonic texture, with some instruments playing sustained notes or chords. The keyboard part includes chord markings for F major and G minor. The page number '10' is located at the top left.

43 F

Fl 1

Fl 2

Kl

Altkl

Altsax

Tensax

Trp 1

Trp 2

Trb

F  
D7(#9)      Gm    Dm7      Gm

komp

47

Fl 1

Fl 2

Kl

Altkl

Altsax

Tensax

Trp 1

Trp 2

Trb

komp

D7(#9) Gm D7(#9) Gm

Detailed description: This page of a musical score covers measures 47 to 50. It features ten staves for various instruments: Flute 1 and 2, Clarinet (Kl), Alto Clarinet (Altkl), Alto Saxophone (Altsax), Tenor Saxophone (Tensax), Trumpet 1 and 2, Trombone (Trb), and Piano accompaniment (komp). The key signature is B-flat major (two flats). The score is written in 4/4 time. Measures 47 and 48 show the woodwinds and brasses entering with specific melodic lines. Measures 49 and 50 continue these lines, with the piano accompaniment providing harmonic support. The piano part includes chord markings: D7(#9) in measures 47 and 49, and Gm in measures 48 and 50.

51 **G** Solon på hela formen.  
(På Bobby Bryants skiva kapar dock sista solisten, pianisten, choruset i början och startar från C)

Fl 1

Fl 2

Kl

Altkl

Altsax

Tensax

Trp 1

Trp 2

Trb

**G** Solon på hela formen.  
(På Bobby Bryants skiva kapar dock sista solisten, pianisten, choruset i början och startar från C)

komp

H

Trumsolo

52

Fl 1

Trumsolo

Fl 2

Trumsolo

Kl

Trumsolo

Altkl

Trumsolo

Altsax

Trumsolo

Tensax

Trp 1

Trumsolo

Trp 2

Trumsolo

Trb

Trumsolo

komp

H

Trumsolo

I

56

Fl 1

Fl 2

Kl

Altkl

Altsax

Tensax

Trp 1

Trp 2

Trb

I

Gm

komp

60

Fl 1

Fl 2

Kl

Altkl

Altsax

Tensax

Trp 1

Trp 2

Trb

komp

F

Gm

Detailed description: This is a page of a musical score for measures 60 through 63. The score is written for a large ensemble, including two flutes (Fl 1 and Fl 2), clarinet (Kl), alto clarinet (Altkl), alto saxophone (Altsax), tenor saxophone (Tensax), two trumpets (Trp 1 and Trp 2), trombone (Trb), and a keyboard player (komp). The music is in a key signature of two flats (B-flat and E-flat) and a common time signature. The score is divided into four measures. The first measure (60) begins with a dynamic marking of *v* (forte) and a fermata over the first two notes. The second measure (61) contains a whole rest for the first two staves. The third measure (62) features a dynamic marking of *v* and a fermata over the first two notes. The fourth measure (63) begins with a dynamic marking of *v* and a fermata over the first two notes. The keyboard part (komp) includes chord markings for F and Gm. The score is written in a standard musical notation style with various articulations and dynamics.



RUBATO

64

J

Fl 1

Fl 2

Kl

Altkl

Altsax

Tensax

RUBATO

Rubato

Rubato

Rubato

Rubato

RUBATO

Trp 1

Trp 2

RUBATO

Rubato

Trb

J

D7(#9)

RUBATO

Gm

D7(#9)

Gm

komp



E

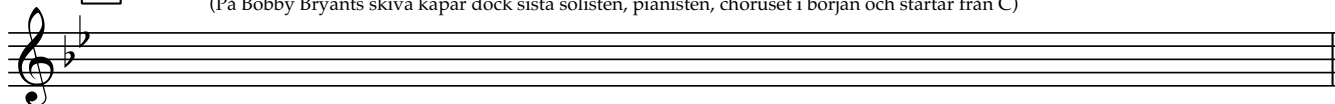


F



G

Solon på hela formen.  
(På Bobby Bryants skiva kapar dock sista solisten, pianisten, choruset i början och startar från C)



H

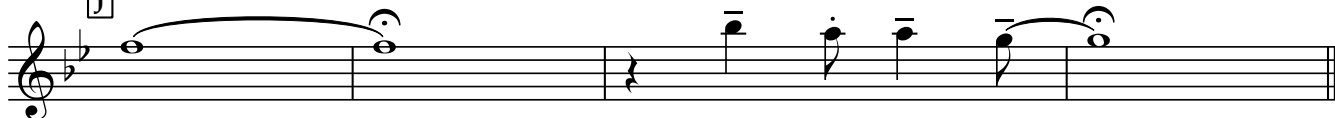
Trumsolo

I



RUBATO

J



# 58:th Street

Bobby Bryant

Trumsolo 3

**A**

**B**

**C**

**D** (frivilligt)

(spela)

E

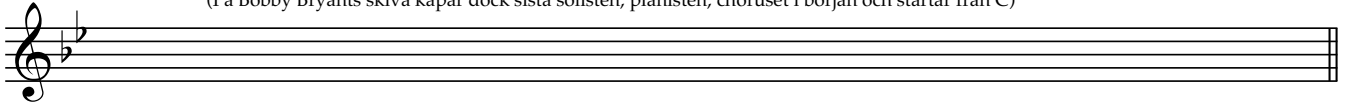


F



G

Solon på hela formen.  
(På Bobby Bryants skiva kapar dock sista solisten, pianisten, choruset i början och startar från C)



H

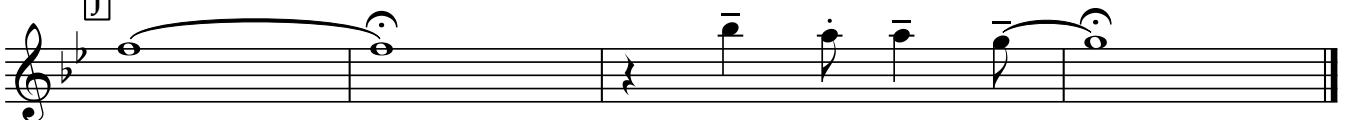
Trumsolo

I



RUBATO

J



Klarinett

# 58:th Street

Bobby Bryant

Trumsolo

3

A

B

C

D

E

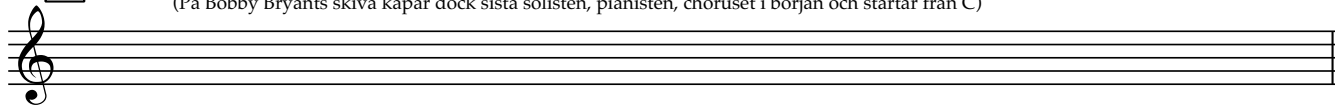


F



G

Solon på hela förmen.  
(På Bobby Bryants skiva kapar dock sista solisten, pianisten, choruset i början och startar från C)



H Trumsolo

I



J

Rubato

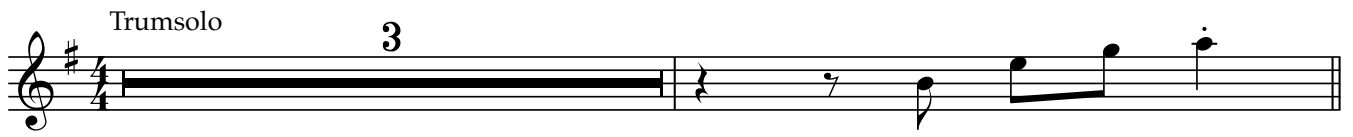


Altklarinet

# 58:th Street

Bobby Bryant

Trumsolo 3



A musical staff in treble clef with a key signature of one sharp (F#) and a 4/4 time signature. It begins with a 3-measure rest, indicated by a large '3' above the staff. This is followed by a triplet of eighth notes: F#4, G4, and A4.

**A**




A musical staff in treble clef with a key signature of one sharp (F#) and a 4/4 time signature. It starts with a quarter rest, followed by eighth notes: F#4, G4, A4, B4, C5, B4, A4, G4, F#4. There are accents over the first, third, and fifth notes.

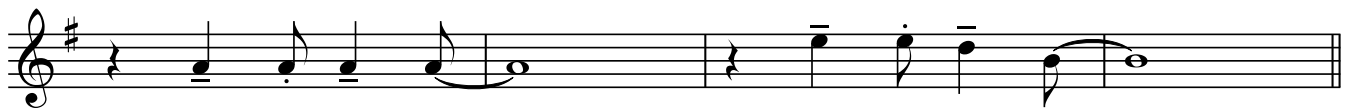


A musical staff in treble clef with a key signature of one sharp (F#) and a 4/4 time signature. It starts with a quarter rest, followed by eighth notes: F#4, G4, A4, B4, C5, B4, A4, G4, F#4. There are accents over the first, third, and fifth notes.

**B**



A musical staff in treble clef with a key signature of one sharp (F#) and a 4/4 time signature. It starts with a quarter rest, followed by quarter notes: F#4, G4, A4, B4. The second measure contains a half note: B4.



A musical staff in treble clef with a key signature of one sharp (F#) and a 4/4 time signature. It starts with a quarter rest, followed by quarter notes: F#4, G4, A4, B4. The second measure contains a half note: B4.

**C**



A musical staff in treble clef with a key signature of one sharp (F#) and a 4/4 time signature. It starts with a quarter rest, followed by eighth notes: F#4, G4, A4, B4, C5, B4, A4, G4, F#4. There are accents over the first, third, and fifth notes.

**D**



A musical staff in treble clef with a key signature of one sharp (F#) and a 4/4 time signature. It starts with a quarter rest, followed by eighth notes: F#4, G4, A4, B4, C5, B4, A4, G4, F#4. There are accents over the first, third, and fifth notes.



A musical staff in treble clef with a key signature of one sharp (F#) and a 4/4 time signature. It starts with a quarter rest, followed by eighth notes: F#4, G4, A4, B4, C5, B4, A4, G4, F#4. There are accents over the first, third, and fifth notes.



**E**

**F**

**G**

Solon på hela formen.  
(På Bobby Bryants skiva kapar dock sista solisten, pianisten, choruset i början och startar från C)

**H** Trumsolo

**I**

**J**

Rubato

Altsaxofon

# 58:th Street

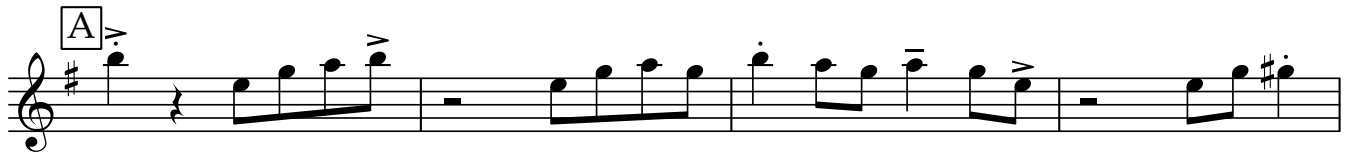
Bobby Bryant

Trumsolo 3



A musical staff in treble clef with a key signature of one sharp (F#) and a 4/4 time signature. It begins with a 3-measure rest, indicated by a large '3' above the staff. This is followed by a triplet of eighth notes: F#4, G4, and A4.

**A**

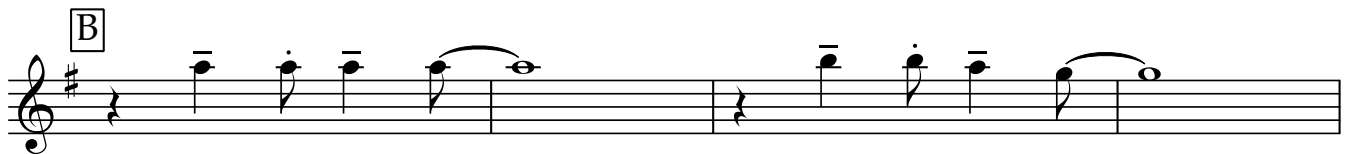


A musical staff in treble clef with a key signature of one sharp (F#) and a 4/4 time signature. It starts with a quarter rest, followed by eighth notes: F#4, G4, A4, B4, A4, G4, F#4. There are accents (>) over the first, third, and fifth notes. The staff continues with eighth notes: F#4, G4, A4, B4, A4, G4, F#4, and ends with a quarter rest.



A musical staff in treble clef with a key signature of one sharp (F#) and a 4/4 time signature. It starts with a quarter rest, followed by eighth notes: F#4, G4, A4, B4, A4, G4, F#4. There are accents (>) over the first, third, and fifth notes. The staff continues with eighth notes: F#4, G4, A4, B4, A4, G4, F#4, and ends with a quarter rest.

**B**



A musical staff in treble clef with a key signature of one sharp (F#) and a 4/4 time signature. It starts with a quarter rest, followed by quarter notes: F#4, G4, A4, B4. There are accents (>) over the first, third, and fifth notes. The staff continues with quarter notes: F#4, G4, A4, B4, and ends with a quarter rest.



A musical staff in treble clef with a key signature of one sharp (F#) and a 4/4 time signature. It starts with a quarter rest, followed by quarter notes: F#4, G4, A4, B4. There are accents (>) over the first, third, and fifth notes. The staff continues with quarter notes: F#4, G4, A4, B4, and ends with a quarter rest.

**C**



A musical staff in treble clef with a key signature of one sharp (F#) and a 4/4 time signature. It starts with a quarter rest, followed by quarter notes: F#4, G4, A4, B4. There are accents (^) over the first, third, and fifth notes. The staff continues with quarter notes: F#4, G4, A4, B4, and ends with a quarter rest.

**D**



A musical staff in treble clef with a key signature of one sharp (F#) and a 4/4 time signature. It starts with a quarter rest, followed by eighth notes: F#4, G4, A4, B4, A4, G4, F#4. There are accents (>) over the first, third, and fifth notes. The staff continues with eighth notes: F#4, G4, A4, B4, A4, G4, F#4, and ends with a quarter rest.



A musical staff in treble clef with a key signature of one sharp (F#) and a 4/4 time signature. It starts with a quarter rest, followed by eighth notes: F#4, G4, A4, B4, A4, G4, F#4. There are accents (>) over the first, third, and fifth notes. The staff continues with eighth notes: F#4, G4, A4, B4, A4, G4, F#4, and ends with a quarter rest.

**E**

**F**

**G**

Solon på hela formen.  
(På Bobby Bryants skiva kapar dock sista solisten, pianisten, choruset i början och startar från C)

**H** Trumsolo

**I**

**J**

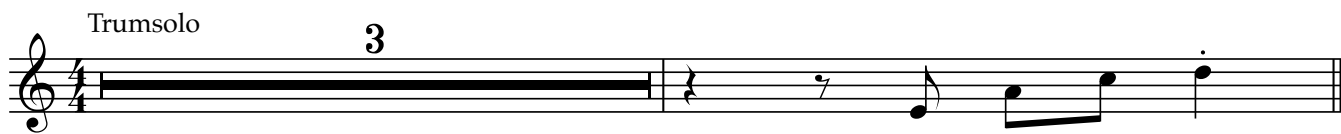
Rubato

Tenorsaxofon

# 58:th Street

Bobby Bryant

Trumsolo 3



A musical staff in 4/4 time. The first four measures contain a solid black bar representing a rest. The fifth measure contains a triplet of eighth notes, with a '3' above it. The notes are G4, A4, and B4.

**A**



A musical staff for section A. It begins with a quarter rest, followed by eighth notes G4, A4, B4, and C5. The next measure has a quarter rest. The third measure contains eighth notes G4, A4, B4, and C5. The fourth measure contains eighth notes G4, A4, B4, and C5. The fifth measure contains eighth notes G4, A4, B4, and C5. The sixth measure contains eighth notes G4, A4, B4, and C5. The seventh measure contains eighth notes G4, A4, B4, and C5. The eighth measure contains eighth notes G4, A4, B4, and C5.



A musical staff continuing section A. It begins with a quarter rest, followed by eighth notes G4, A4, B4, and C5. The next measure has a quarter rest. The third measure contains eighth notes G4, A4, B4, and C5. The fourth measure contains eighth notes G4, A4, B4, and C5. The fifth measure contains eighth notes G4, A4, B4, and C5. The sixth measure contains eighth notes G4, A4, B4, and C5. The seventh measure contains eighth notes G4, A4, B4, and C5. The eighth measure contains eighth notes G4, A4, B4, and C5.

**B**



A musical staff for section B. It begins with a quarter rest, followed by quarter notes G4, A4, and B4. The next measure has a quarter rest. The third measure contains quarter notes G4, A4, and B4. The fourth measure contains quarter notes G4, A4, and B4. The fifth measure contains quarter notes G4, A4, and B4. The sixth measure contains quarter notes G4, A4, and B4. The seventh measure contains quarter notes G4, A4, and B4. The eighth measure contains quarter notes G4, A4, and B4.



A musical staff continuing section B. It begins with a quarter rest, followed by quarter notes G4, A4, and B4. The next measure has a quarter rest. The third measure contains quarter notes G4, A4, and B4. The fourth measure contains quarter notes G4, A4, and B4. The fifth measure contains quarter notes G4, A4, and B4. The sixth measure contains quarter notes G4, A4, and B4. The seventh measure contains quarter notes G4, A4, and B4. The eighth measure contains quarter notes G4, A4, and B4.

**C**



A musical staff for section C. It begins with a quarter rest, followed by a quarter note G4 with an accent (^) and a fermata. The next measure contains eighth notes G4, A4, B4, and C5. The third measure contains eighth notes G4, A4, B4, and C5. The fourth measure contains eighth notes G4, A4, B4, and C5. The fifth measure contains eighth notes G4, A4, B4, and C5. The sixth measure contains eighth notes G4, A4, B4, and C5. The seventh measure contains eighth notes G4, A4, B4, and C5. The eighth measure contains eighth notes G4, A4, B4, and C5.

**D**



A musical staff for section D. It begins with a quarter rest, followed by eighth notes G4, A4, B4, and C5. The next measure contains eighth notes G4, A4, B4, and C5. The third measure contains eighth notes G4, A4, B4, and C5. The fourth measure contains eighth notes G4, A4, B4, and C5. The fifth measure contains eighth notes G4, A4, B4, and C5. The sixth measure contains eighth notes G4, A4, B4, and C5. The seventh measure contains eighth notes G4, A4, B4, and C5. The eighth measure contains eighth notes G4, A4, B4, and C5.



A musical staff continuing section D. It begins with eighth notes G4, A4, B4, and C5. The next measure contains eighth notes G4, A4, B4, and C5. The third measure contains eighth notes G4, A4, B4, and C5. The fourth measure contains eighth notes G4, A4, B4, and C5. The fifth measure contains eighth notes G4, A4, B4, and C5. The sixth measure contains eighth notes G4, A4, B4, and C5. The seventh measure contains eighth notes G4, A4, B4, and C5. The eighth measure contains eighth notes G4, A4, B4, and C5.

E

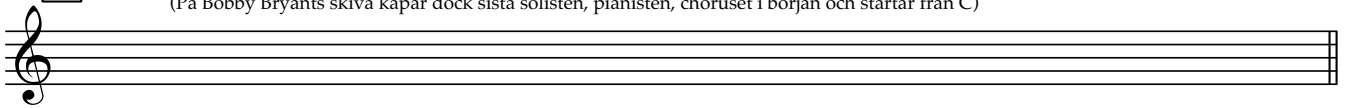


F



G

Solon på hela förmen.  
(På Bobby Bryants skiva kapar dock sista solisten, pianisten, choruset i början och startar från C)



H Trumsolo

I



J

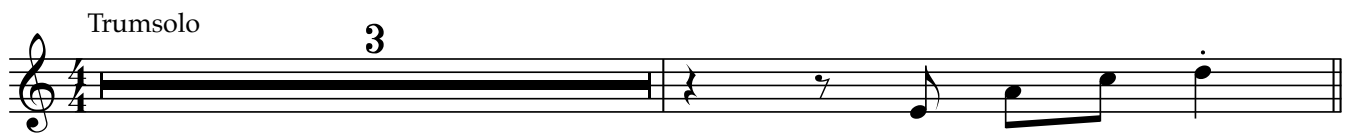
Rubato



# 58:th Street

Bobby Bryant

Trumsolo 3



A musical staff in 4/4 time. It begins with a 3-measure rest, indicated by a large '3' above the staff. This is followed by a triplet of eighth notes: G4, A4, B4.

**A**



A musical staff for section A, starting with a quarter rest. The melody consists of eighth notes: G4, A4, B4, C5, B4, A4, G4, F4, E4, D4, C4.



Continuation of section A, starting with a quarter rest. The melody consists of eighth notes: D4, C4, B3, A3, G3, F3, E3, D3, C3, B2, A2, G2.

**B**



A musical staff for section B, starting with a quarter rest. The melody consists of eighth notes: G4, A4, B4, C5, B4, A4, G4, F4, E4, D4, C4.



Continuation of section B, starting with a quarter rest. The melody consists of eighth notes: D4, C4, B3, A3, G3, F3, E3, D3, C3, B2, A2, G2.

**C**



A musical staff for section C, starting with a quarter rest. The melody consists of eighth notes: G4, A4, B4, C5, B4, A4, G4, F4, E4, D4, C4.

**D**



A musical staff for section D, starting with a quarter rest. The melody consists of eighth notes: G4, A4, B4, C5, B4, A4, G4, F4, E4, D4, C4.



Continuation of section D, starting with a quarter rest. The melody consists of eighth notes: D4, C4, B3, A3, G3, F3, E3, D3, C3, B2, A2, G2.

E

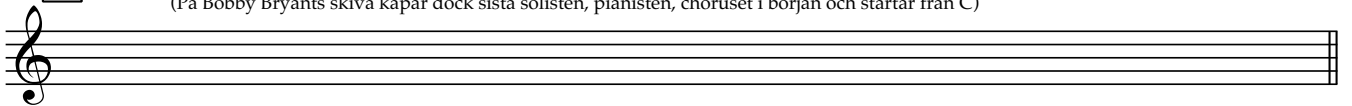


F



G

Solon på hela formen.  
(På Bobby Bryants skiva kapar dock sista solisten, pianisten, choruset i början och startar från C)



H

Trumsolo

I



RUBATO

J



# 58:th Street

Bobby Bryant

Trumsolo 3



A musical staff in 4/4 time. The first four measures contain a solid black bar representing a rest. The fifth measure contains a triplet of eighth notes, indicated by a '3' above the notes.

**A**



A musical staff for section A, starting with a quarter rest followed by eighth and quarter notes.



A musical staff continuing section A with eighth and quarter notes.

**B**



A musical staff for section B, starting with a quarter rest followed by eighth and quarter notes.



A musical staff continuing section B with eighth and quarter notes.

**C**



A musical staff for section C, starting with a quarter rest followed by eighth and quarter notes.

**D**



A musical staff for section D, starting with a quarter rest followed by eighth and quarter notes.



A musical staff continuing section D with eighth and quarter notes.



E

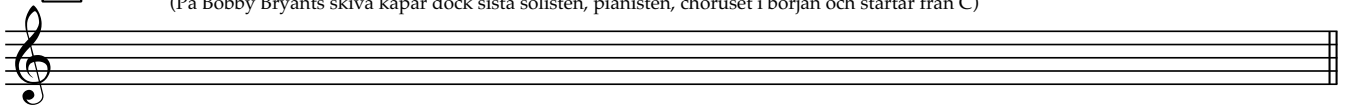


F



G

Solon på hela formen.  
(På Bobby Bryants skiva kapar dock sista solisten, pianisten, choruset i början och startar från C)



H

Trumsolo

I



RUBATO

J



# **58:th Street**

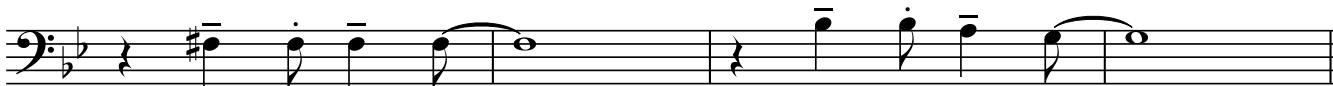
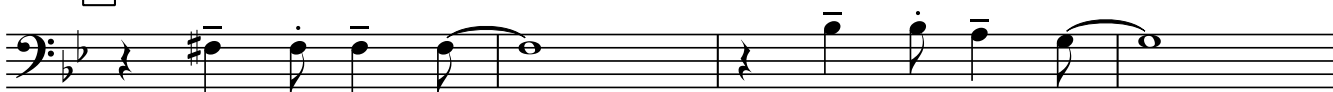
**Trombon**



E

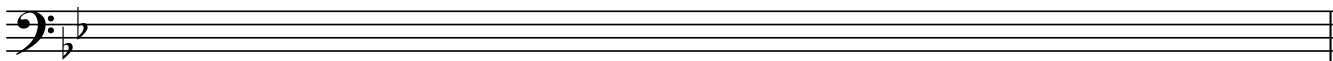


F



G

Solon på hela formen.  
(På Bobby Bryants skiva kapar dock sista solisten, pianisten, chorusen i början och startar från C)



H

Trumsolo

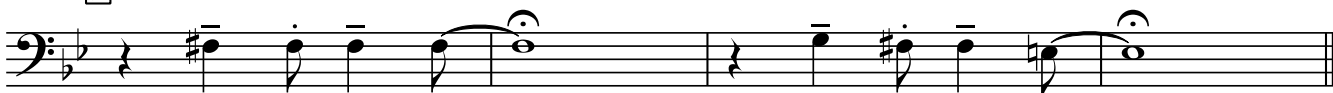
3

I



J

Rubato



# 58:th Street

Bobby Bryant

Trumsolo

3

4 4 1 3

A

1 4 1 3 1 4 1 3 1 1 3 1 3 1 4 4 1 4

3 4 1 4 3 4 1 3 1 1 3 1 3 1 4

B

5 5 5 5 1 1 2 4

5 5 5 5 1 1 2 4

C

4 6 5 6 1 4 1 6 4 6 5 6 1 4 1 4 4 6 5 6 1 4 1 6

D

4 1 2 4 1 4 4 1 3 2 3 1 2 4 1 4 4 1 4

1 3 1 4 1 5 6 1 4 4 4 1 3

**E**

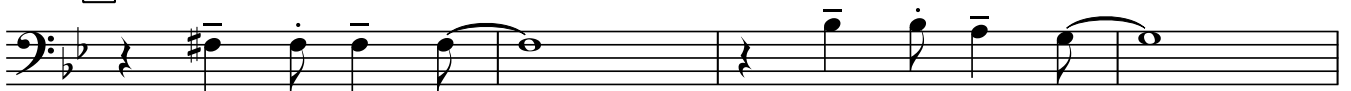


1 4 1 3 1 4 1 3 1 1 3 1 3 1 4 4 1 4

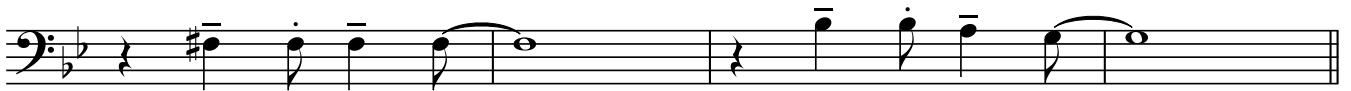


3 4 1 4 3 4 1 3 1 1 3 1 3 1 4

**F**



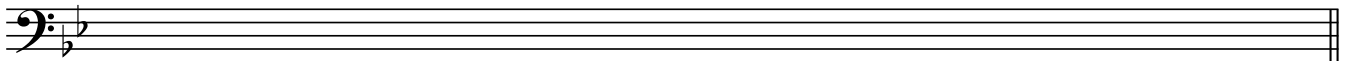
5 5 5 5 1 1 2 4



5 5 5 5 1 1 2 4

**G**

Solon på hela formen.  
(På Bobby Bryants skiva kapar dock sista solisten, pianisten, choruset i början och startar från C)



**H**

Trumsolo

3

**I**



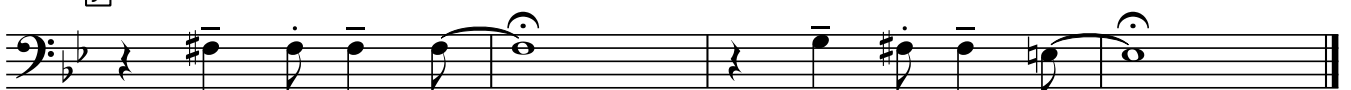
4 4 1 3 1 4 1 3 1 4 1 3 1 1 3 1 3 1 4 4 1 4



3 4 1 4 3 4 1 3 1 1 3 1 3 1 4

**J**

Rubato



5 5 5 5 4 5 5 2



Trumsolo **3**

**A** Gm

F Gm

**B** D7(#9) Gm Dm7 Gm

D7(#9) Gm D7(#9) Gm

**C** Eb7

**D** D7 (endast blås och trummor)

BREAK

Bara piano (på temat)  
(men bara trummor och solist under solo) (alla)

BREAK



**E** Gm

F Gm

**F** D7(#9) Gm Dm7 Gm

D7(#9) Gm D7(#9) Gm

**G**

Solon på hela formen.  
(På Bobby Bryants skiva kapar dock sista solisten, pianisten, choruset i början och startar från C)

**H** Trumsolo **I** Gm

3

F Gm

**J** D7(#9) RUBATO Gm D7(#9) Gm