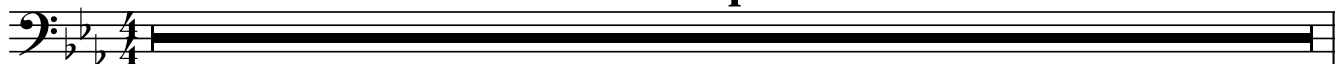


Trombon

# CALM DOWN

Jan Utbult

4



A musical staff in bass clef with a key signature of two flats and a 4/4 time signature. It contains a single whole rest that spans the entire 4-measure duration of the staff.

A

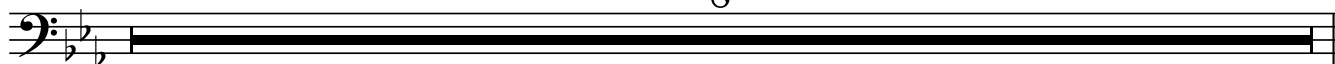


A musical staff in bass clef with a key signature of two flats and a 4/4 time signature. It contains a melodic line consisting of four measures: a dotted quarter note, an eighth note, a quarter note, and a half note.



A musical staff in bass clef with a key signature of two flats and a 4/4 time signature. It contains a melodic line consisting of four measures: a dotted quarter note, an eighth note, a quarter note, and a half note.

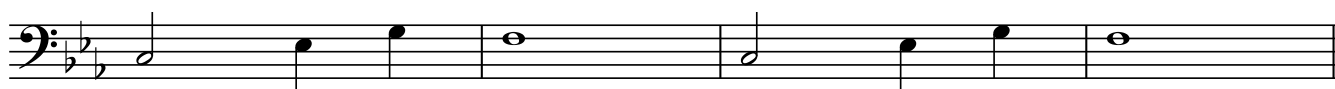
8



A musical staff in bass clef with a key signature of two flats and a 4/4 time signature. It contains a single whole rest that spans the entire 8-measure duration of the staff.

B

MELLANSPEL



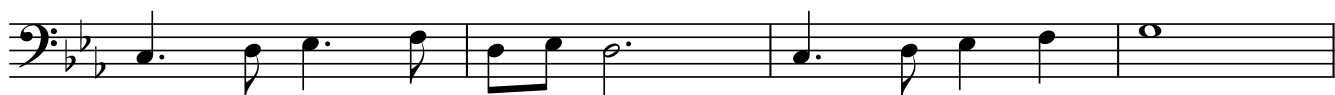
A musical staff in bass clef with a key signature of two flats and a 4/4 time signature. It contains a melodic line consisting of four measures: a dotted quarter note, an eighth note, a quarter note, and a half note.

C

CHORUS 2



A musical staff in bass clef with a key signature of two flats and a 4/4 time signature. It contains a melodic line consisting of four measures: a dotted quarter note, an eighth note, a quarter note, and a half note.



A musical staff in bass clef with a key signature of two flats and a 4/4 time signature. It contains a melodic line consisting of four measures: a dotted quarter note, an eighth note, a quarter note, and a half note.



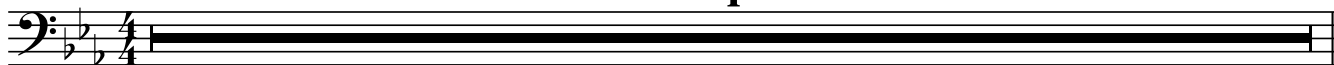
A musical staff in bass clef with a key signature of two flats and a 4/4 time signature. It contains a melodic line consisting of four measures: a dotted quarter note, an eighth note, a quarter note, and a half note.



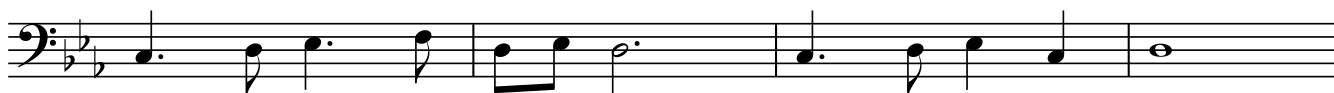
A musical staff in bass clef with a key signature of two flats and a 4/4 time signature. It contains a melodic line consisting of four measures: a dotted quarter note, an eighth note, a quarter note, and a half note.

# CALM DOWN

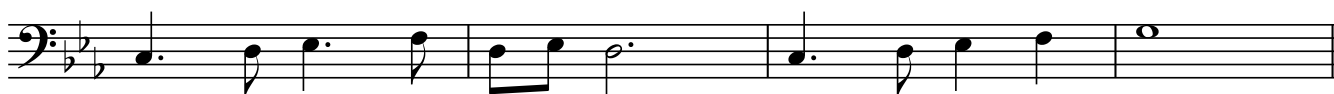
4



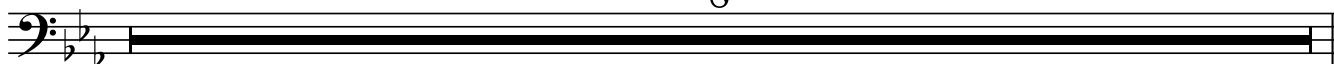
**A** 6 4 3 1 4 3 4 6 4 3 6 4



6 4 3 1 4 3 4 6 4 3 1 4

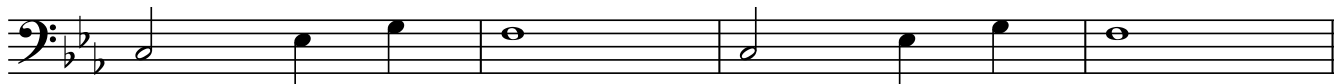


8



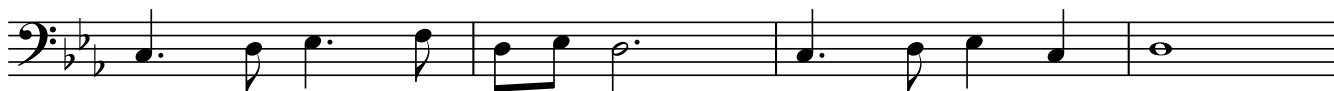
MELLANSPEL

**B** 6 3 4 1 6 3 4 1

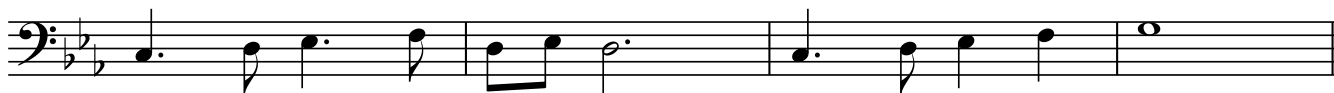


CHORUS 2

**C** 6 4 3 1 4 3 4 6 4 3 6 4



6 4 3 1 4 3 4 6 4 3 1 4



3 4 1 4 1 3 1 3 4 1 4



3 4 1 4 1 3 1 3 4 3 6

