

Mellanaktsmusik nr 2 ur

ROSAMUNDA

Franz Schubert (arr Dicken Hedrenius)

♩ = 65

A

G G/B Am D7/F# G E7/G# Am Bm7(b5) C D/F# G G/B Am D7/F#

Melodi

Melodi

A

Blockflöjt

Blockflöjt

Blockflöjt x

Blockflöjt x

Tvärflöjt

Tvärflöjt

Tvärflöjt x

Tvärflöjt x

Klarinett

Klarinett

Klarinett x

Klarinett x

Altsaxofon

Altsaxofon

Altsaxofon x

Altsaxofon x

Trumpet 1

Trumpet 1

Trumpet 1 x

Trumpet 1 x

Trumpet 2

Trumpet 2

Trumpet 2 x

Trumpet 2 x

Trombon

Trombon

Trombon x

Trombon x

Tuba i C på Dickens vis

Tuba i C på Dickens vis

Tuba i F på Dickens vis

Tuba i F på Dickens vis

Tuba i Eb på Dickens vis

Tuba i Eb på Dickens vis

p

Mel
G D7/A G/B D/A A7 D Am D7/F# G Em
mf

B♭fl
B F# G D B G G F# F# E D C C C B A B B B A G
mf

B♭fl x
mf

Tvfl
mf

Tvfl x
B F# G (D) B G G F# F# E D C C C B A B B B A G
mf

Klar
A E E E E E E F# E F# F# F# E D E E E A A
mp

Klar x
mp

Alt
Alt x

Trp 1
E E E E F# F# E D# E B B B E E A A A F# F#
mp

Trp 1 x
mp

Trp 2
C# D C# C# A A B B B F# F# F# E E E E E C# C#
mp

Trp 2 x

Trb
4 5 4 4 4 4 4 4 5 3 3 3 3 3 4 4 4 4 4
mp

Trb x

Tu spec C
G D7/A G/B D/A A7 D Am D7/F# G Em
mp

Tu spec F
C G7/D C/E G/D D7 G B7 G7/B C Am
mp

Tu spec Eb
D A7/E D/F# A/E E7 A Em A7/C# D Bm
mp

Chord Chart (Top):
B/D# Em B/D# F#7/C B Gm Gm/Bb F#° D7/A G D7/A G/B C D7 G

Chord Chart (Bottom):
B/D# Em B/D# F#7/C B Gm Gm/Bb F#° D7/A G D7/A G/B C D7 G
E/G# Am E/G# B7/F E Cm/Eb B° G7/D C G7/D C/E F G7 C
F#/A# Bm F#/A# C#7/G F# Dm Dm/F C#° A7/E D A7/E D/F# G A7 D

Instrument Parts:
Mel: Treble clef, melody line.
Blfl: Treble clef, melody line with notes F# A G F# E B.
Blfl x: Treble clef, melody line with notes F# A G F# E B.
Tvfl: Treble clef, melody line with notes F# A G F# E B.
Tvfl x: Treble clef, melody line with notes F# A G F# E B.
Klar: Treble clef, melody line with notes F F# F# F F# F.
Klar x: Treble clef, melody line with notes F F# F# F F# F.
Alt: Treble clef, rests.
Alt x: Treble clef, rests.
Trp 1: Treble clef, melody line with notes G B A G F# E#.
Trp 1 x: Treble clef, melody line with notes G B A G F# E#.
Trp 2: Treble clef, melody line with notes C# C# C# E# D C#.
Trp 2 x: Treble clef, melody line with notes C# C# C# E# D C#.
Trb: Bass clef, melody line with notes 3 2 2 2 1 4.
Trb x: Bass clef, melody line with notes 3 2 2 2 1 4.
Tu spec C: Bass clef, melody line with notes B/D# Em B/D# F#7/C B.
Tu spec F: Bass clef, melody line with notes E/G# Am E/G# B7/F E.
Tu spec Eb: Bass clef, melody line with notes F#/A# Bm F#/A# C#7/G F#.

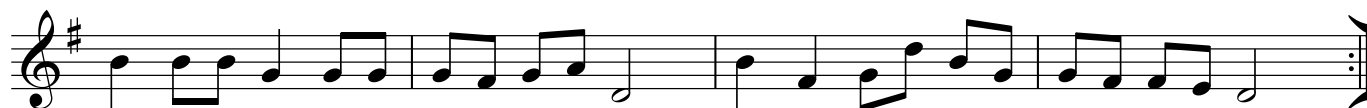
Mellanaktsmusik nr 2 ur

ROSAMUNDA

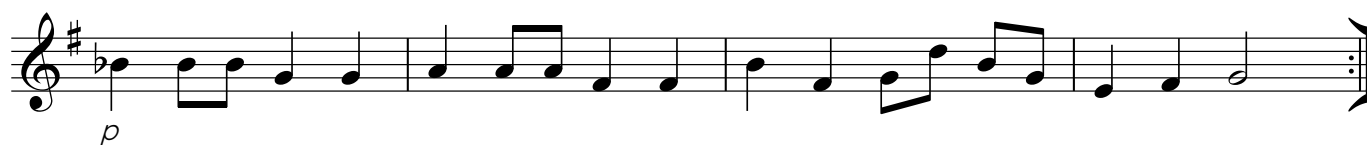
Franz Schubert (arr Dicken Hedrenius)

♩ = 65

A



B



Mellanaktsmusik nr 2 ur

ROSAMUNDA

Franz Schubert (arr Dicken Hedrenius)

♩ = 65

A B B B G G G F# G A D B B B E E E E A (G#)A B C

Musical notation for the first staff of 'Rosamunda', starting with a repeat sign and a piano (*p*) dynamic marking. The notes are: B, B, B, G, G, G, F#, G, A, D, B, B, B, E, E, E, E, A, (G#)A, B, C.

B B B G G G G F# G A D B F# G D B G G F# F# E D

Musical notation for the second staff of 'Rosamunda'. The notes are: B, B, B, G, G, G, G, F#, G, A, D, B, F#, G, D, B, G, G, F#, F#, E, D.

B C C C B A B B B A G F# A G F# E B

Musical notation for the third staff of 'Rosamunda', starting with a mezzo-forte (*mf*) dynamic marking. The notes are: C, C, C, B, A, B, B, B, A, G, F#, A, G, F#, E, B.

Bb Bb Bb G G A A A F# F# B F# G D B G E F# G

Musical notation for the fourth staff of 'Rosamunda', starting with a piano (*p*) dynamic marking. The notes are: Bb, Bb, Bb, G, G, A, A, A, F#, F#, B, F#, G, D, B, G, E, F#, G.

Mellanaktsmusik nr 2 ur

ROSAMUNDA

Franz Schubert (arr Dicken Hedrenius)

♩ = 65

A

p

(*f*)

B

mf

p

Mellanaktsmusik nr 2 ur

ROSAMUNDA

Franz Schubert (arr Dicken Hedrenius)

♩ = 65

A B B B G G G F# G A D B B B E E E E A G# A B C

p

B B B G G G G F# G A D B F# G (D) B G G F# F# E D

p

B C C C B A B B B A G F# A G F# E B

mf

Bb Bb Bb G G A A A F# F# B F# G (D) B G E F# G

p

Mellanaktsmusik nr 2 ur

ROSAMUNDA

Franz Schubert (arr Dicken Hedrenius)

♩ = 65

A



B



Mellanaktsmusik nr 2 ur

ROSAMUNDA

Franz Schubert (arr Dicken Hedrenius)

♩ = 65

A A A A E E F# F# E A A A E E E D D D D E E

p

A A A E E E F# F# F# E A E E E E E E F# E

B F# F# F# E D E E E A A F F# F# F F# F

mp

A A A E E D D D E E A E A E D E E

pp

Mellanaktsmusik nr 2 ur

ROSAMUNDA

Franz Schubert (arr Dicken Hedrenius)

♩ = 65

A

pp

B

mp

Mellanaktsmusik nr 2 ur

ROSAMUNDA

Franz Schubert (arr Dicken Hedrenius)

♩ = 65

A

E E E C# C# D D D E E E F# F# F# F# F# F# E D

pp

E E E C# C# C# D D D D E E E E F# F# E D# E

B

B B B E E A A A F# F# G B A G F# E# (F)

mp

E E E C C F F F D D E E A E F# E A

pp

Mellanaktsmusik nr 2 ur

ROSAMUNDA

Franz Schubert (arr Dicken Hedrenius)

♩ = 65

A

First line of musical notation for section A. It begins with a treble clef, a key signature of three sharps (F#, C#, G#), and a 4/4 time signature. The music consists of a sequence of eighth and quarter notes. A *pp* dynamic marking is placed below the first measure.

Second line of musical notation for section A, continuing the melodic line from the first line.

B

First line of musical notation for section B. It begins with a treble clef, a key signature of three sharps (F#, C#, G#), and a 4/4 time signature. The music consists of a sequence of eighth and quarter notes. A *pp* dynamic marking is placed below the first measure.

Second line of musical notation for section B, continuing the melodic line from the first line. A *pp* dynamic marking is placed below the first measure.

Mellanaktsmusik nr 2 ur

ROSAMUNDA

Franz Schubert (arr Dicken Hedrenius)

♩ = 65

A C# C# C# A A B B B C# C# C# C# C# C# D D D D B B

pp

C# C# C# A A A B B B B C# D C# C# A A B B B

B F# F# F# E E E E E C# C# C# C# C# (F) E# D C#

C C C A A D D D B B C# D E C# D D C#

pp

Mellanaktsmusik nr 2 ur

ROSAMUNDA

Franz Schubert (arr Dicken Hedrenius)

♩ = 65



Mellanaktsmusik nr 2 ur

ROSAMUNDA

Franz Schubert (arr Dicken Hedrenius)

♩ = 65

A C# C# C# A A A G# A B E C# C# C# F# F# F# F# B A# B C# D

p

C# C# C# A A A A G# A B E C# G# A E C# A A G# G# F# E

p

B D D D C# B C# C# C# B A G# B A G# F# C#

mf

C C C A A B B B G# G# C# G# A E C# A F# G# A

p

Mellanaktsmusik nr 2 ur

ROSAMUNDA

Franz Schubert (arr Dicken Hedrenius)

♩ = 65

A

pp

Musical notation for section A, first line. Bass clef, key signature of one sharp (F#), 4/4 time signature. The notation includes a repeat sign at the beginning and a dynamic marking of *pp* (pianissimo).

Musical notation for section A, second line. Bass clef, key signature of one sharp (F#), 4/4 time signature. The notation includes a repeat sign at the end.

B

mp

Musical notation for section B, first line. Bass clef, key signature of one sharp (F#), 4/4 time signature. The notation includes a dynamic marking of *mp* (mezzo-piano).

pp

Musical notation for section B, second line. Bass clef, key signature of one sharp (F#), 4/4 time signature. The notation includes a dynamic marking of *pp* (pianissimo).

Mellanaktsmusik nr 2 ur

ROSAMUNDA

Franz Schubert (arr Dicken Hedrenius)

♩ = 65

A 4 4 4 4 4 4 4 4 5 4 4 4 3 3 3 2 2 2 4 5 5

pp

4 4 4 4 4 4 4 4 4 5 4 5 4 4 4 4 4 4 5

B 3 3 3 3 3 4 4 4 4 4 3 2 2 2 1 4

mp

4 4 4 4 4 5 5 5 4 4 4 2 4 4 4 5 4

pp

Mellanaktsmusik nr 2 ur

ROSAMUNDA

Franz Schubert (arr Dicken Hedrenius)

♩ = 65

A G G/B Am D⁷/F[#] G E⁷/G[#] Am Bm⁷(b⁵) C D/F[#]

G G/B Am D⁷/F[#] G D⁷/A G/B D/A A⁷ D

B Am D⁷/F[#] G Em B/D[#] Em B/D[#] F^{#7}/C B

Gm Gm/B^b F^{#°} D⁷/A G D⁷/A G/B C D⁷ G

Mellanaktsmusik nr 2 ur

ROSAMUNDA

Franz Schubert (arr Dicken Hedrenius)

♩ = 65

A

p

p

B

mp

pp

Mellanaktsmusik nr 2 ur

ROSAMUNDA

Franz Schubert (arr Dicken Hedrenius)

♩ = 65

A D D/F# Em A7/C# D B7/D# Em F#m7(b5) G A/C#

p

D D/F# Em A7/C# D A7/E D/F# A/E E7 A

B Em A7/C# D Bm F#/A# Bm F#/A# C#7/G F#

mp

Dm Dm/F C#° A7/E D A7/E D/F# G A7 D

pp