

ROCK DOWN

Jan Utbult (arr Dicken Hedrenius)

En speciälversion för GlasSpråkarna, stjärnorna i Valentuna

Am Dm E Am

Melodi

Blockflöjt
C A C A C A C A C C A C A C A C A C C A C A C A C A C C A C A C C A C A C

Blockflöjt x

Tvärflöjt
C A C A C A C A C C A C A C A C A C C A C A C A C A C C A C A C C A C A C

Tvärflöjt x

Klarinett
F# D F# D F#D F#D F# F# D F# D F#D F#D F# E G E G F# D F# D F#D F#D F#

Klarinett x

Altsaxofon

Altsaxofon x

Trumpet 1
B D E D B A B A F# E G B E D B A A# G F# E D B

Trumpet 1 x

Trumpet 2
F# D F# D F#D F#D F# F# D F# D F#D F#D F# G B G B F# D F# D F#D F#D F#

Trumpet 2 x

Trombon
A C D E G E E D C A D E F E F E D C D D C A

Trombon x

(= trombonstämman med ackord) 2 6 4 2 4 2 2 4 6 2 4 2 1 2 1 2 4 6 4 4 6 2

Tuba i C på Dickens vis
Am Dm E Am

(= trombonstämman med ackord)

Tuba i Eb på Dickens vis
Em Am B Em

(= trombonstämman med ackord)

Tuba i F på Dickens vis
Dm Gm A Dm

Am Dm E Am

Mel

Blfl
C A C A C A C A C
C A C A C A C A C
C A C A C A C A C
C A C A C A C A C

Blfl x

Tvfl
C A C A C A C A C
E C E C E C E C E
D F A C A G# G F# E C E G#A

Tvfl x

Klar
F# D F# D F# D F# D F#
F# D F# D F# D F# D F#
E G E G F# D F# D F# D F# D F#

Klar x

Alt

Alt x

Trp 1
F# B D E D B A B A F# E G B E D E E E E E B B B B B

Trp 1 x

Trp 2
F# D F# D F# D F# D F# A F# A F# A F#A F#A G B G B F# D F# D F# D F# D F#

Trp 2 x

Trb
A A C D E G E E D C A D E F E F E D D D D D A A A A A

Trb x
2 Am 2 6 4 2 4 2 2 4 6 Dm 2 4 2 1 2 1 2 4 4 4 4 4 Am 2 2 2 2 2

Tu spec C
Em Am B Em

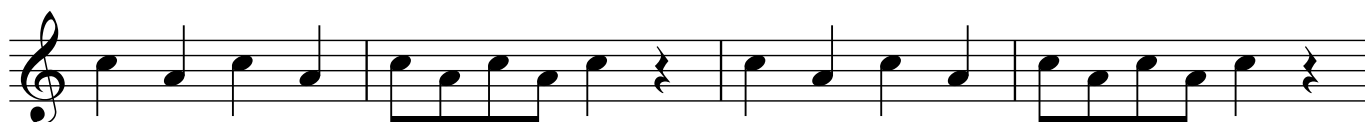
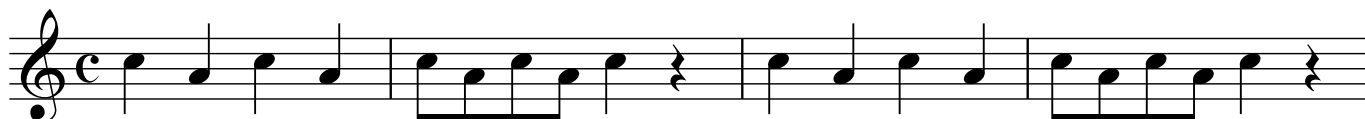
Tu specEb
Dm Gm A Dm

Tu spec F

ROCK DOWN

En specialversion för GlasSpråkarna, stjärnorna i Valentuna

Jan Utbult (arr Dicken Hedrenius)



ROCK DOWN


En specialversion för GlasSpråkarna, stjärnorna i Valentuna

Jan Utbult (arr Dicken Hedrenius)

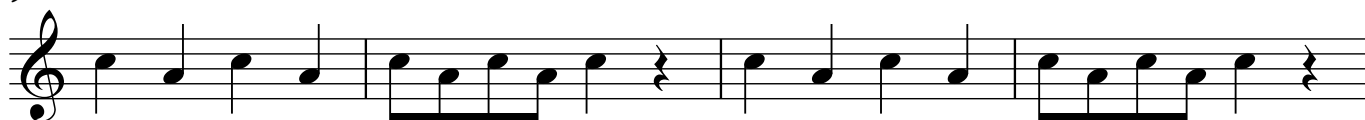
C A C A C A C A C A C A C




5 A C A C C A C A C A C A C



9 C A C A C A C A C A C A C



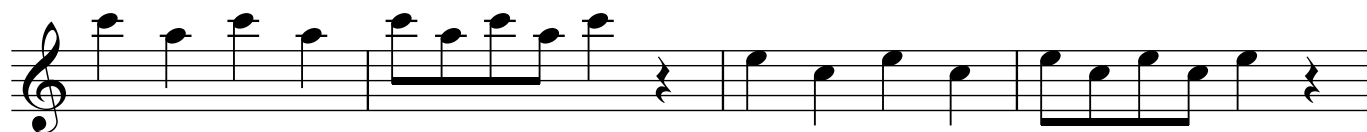
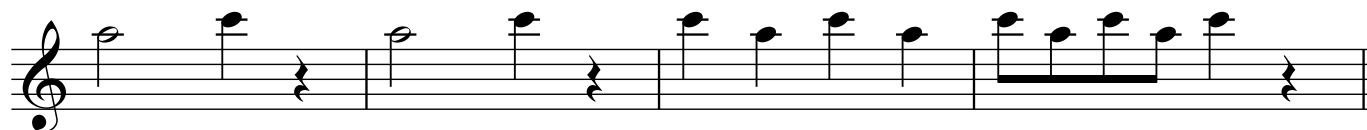
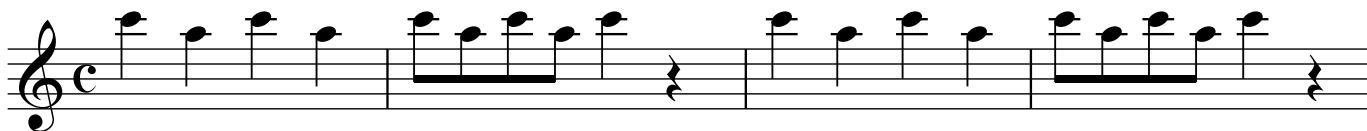
A C A C C A C A C A C A C



ROCK DOWN

En specialversion för GlasSpråkarna, stjärnorna i Valentuna

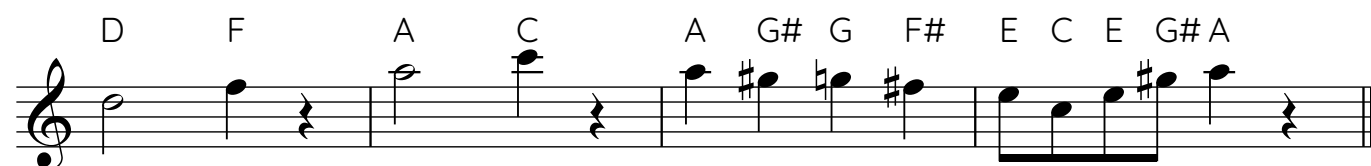
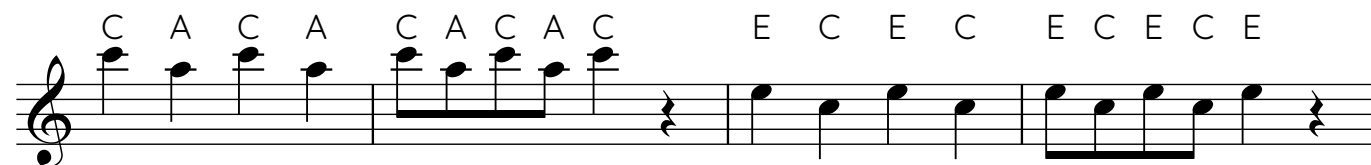
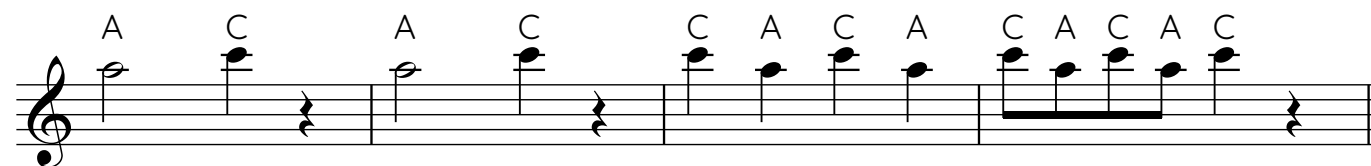
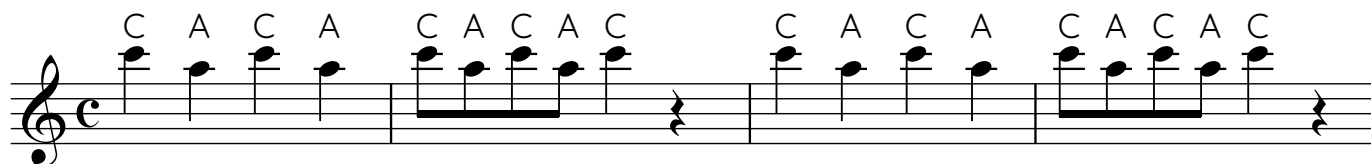
Jan Utbult (arr Dicken Hedrenius)



ROCK DOWN

En specialversion för GlasSpråkarna, stjärnorna i Valentuna

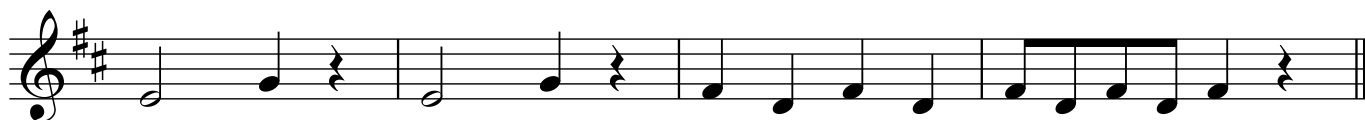
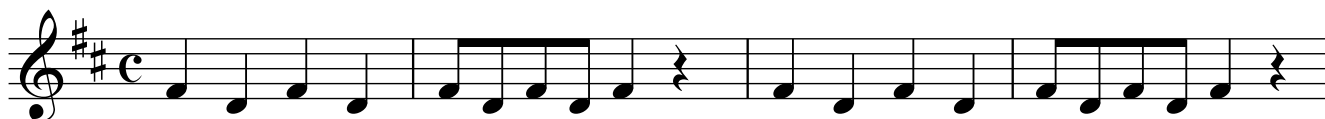
Jan Utbult (arr Dicken Hedrenius)



ROCK DOWN

En specialversion för GlasSpråkarna, stjärnorna i Valentuna

Jan Utbult (arr Dicken Hedrenius)



ROCK DOWN

En specialversion för GlasSpråkarna, stjärnorna i Valentuna

Jan Utbult (arr Dicken Hedrenius)

F# D F# D F# D F# D F# F# D F# D F# D F# D F#

E G E G F# D F# D F# D F# D F#

F# D F# D F# D F# D F# F# D F# D F# D F# D F#

E G E G F# D F# D F# D F# D F#

ROCK DOWN

En specialversion för GlasSpråkarna, stjärnorna i Valentuna

Jan Utbult (arr Dicken Hedrenius)



ROCK DOWN

En specialversion för GlasSpråkarna, stjärnorna i Valentuna

Jan Utbult (arr Dicken Hedrenius)

B D E D B A B A F#



E G B E D B A A# G F# E D B



F# B D E D B A B A F#



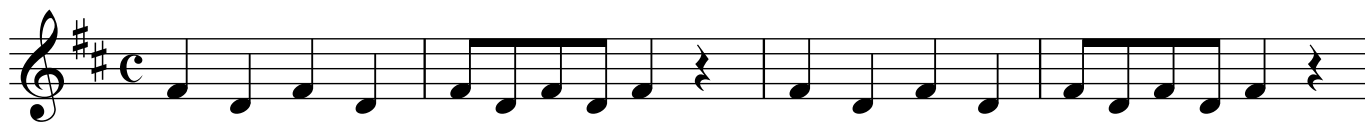
E G B E D E E E E E B B B B B



ROCK DOWN

En specialversion för GlasSpråkarna, stjärnorna i Valentuna

Jan Utbult (arr Dicken Hedrenius)



ROCK DOWN

En specialversion för GlasSpråkarna, stjärnorna i Valentuna

Jan Utbult (arr Dicken Hedrenius)

F# D F# D F# D F# D F# F# D F# D F# D F# D F#

The first musical staff is in treble clef, key of D major (two sharps), and common time (C). It contains four measures of music. The notes are: G4, A4, B4, C5 (quarter); D5, C5, B4, A4 (quarter); G4, F#4, E4, D4 (quarter); C4, B3, A3, G3 (quarter). There are rests in the second and fourth measures after the second and fourth notes respectively.

G B G B F# D F# D F# D F# D F#

The second musical staff is in treble clef, key of D major. It contains four measures of music. The notes are: G4, B4, G4, B4 (quarter); F#4, D4, F#4, D4 (quarter); F#4, D4, F#4, D4 (quarter); F#4, D4, F#4, D4 (quarter). There are rests in the first and second measures after the first and second notes respectively.

F# D F# D F# D F# D F# A F# A F# A F# A F# A

The third musical staff is in treble clef, key of D major. It contains four measures of music. The notes are: F#4, D4, F#4, D4 (quarter); F#4, D4, F#4, D4 (quarter); A4, F#4, A4, F#4 (quarter); A4, F#4, A4, F#4 (quarter). There are rests in the second and fourth measures after the second and fourth notes respectively.

G B G B F# D F# D F# D F# D F#

The fourth musical staff is in treble clef, key of D major. It contains four measures of music. The notes are: G4, B4, G4, B4 (quarter); F#4, D4, F#4, D4 (quarter); F#4, D4, F#4, D4 (quarter); F#4, D4, F#4, D4 (quarter). There are rests in the first and second measures after the first and second notes respectively.

ROCK DOWN

En specialversion för GlasSpråkarna, stjärnorna i Valentuna

Jan Utbult (arr Dicken Hedrenius)



ROCK DOWN

En specialversion för GlasSpråkarna, stjärnorna i Valentuna

Jan Utbult (arr Dicken Hedrenius)

A C D E G E E D C

2 6 4 2 4 2 2 4 6

A D E F E F E D C D D C A

2 4 2 1 2 1 2 4 6 4 4 6 2

A A C D E G E E D C

2 2 6 4 2 4 2 2 4 6

A D E F E F E D D D D D A A A A A

2 4 2 1 2 1 2 4 4 4 4 4 2 2 2 2 2

ROCK DOWN

En specialversion för GlasSpråkarna, stjärnorna i Valentuna

(= trombonstämman med ackord)

Jan Utbult (arr Dicken Hedrenius)

Am



Dm

E

Am



Am



Dm

E

Am



ROCK DOWN

En specialversion för GlasSpråkarna, stjärnorna i Valentuna

(= trombonstämman med ackord)

Jan Utbult (arr Dicken Hedrenius)

Dm

The first staff of music is in bass clef with a key signature of one flat (B-flat) and a common time signature (C). It begins with a whole rest, followed by a quarter rest, then a quarter note G2, an eighth note F2, an eighth note E2, a quarter note D2, a quarter note C2, a quarter note B1, and a quarter note A1. The staff concludes with a double bar line.

Gm A Dm

The second staff of music is in bass clef with a key signature of one flat and a common time signature. It starts with a whole rest, followed by a quarter rest, then a quarter note G2, an eighth note F2, an eighth note E2, a quarter note D2, a quarter note C2, a quarter note B1, and a quarter note A1. The staff concludes with a double bar line.

Dm

The third staff of music is in bass clef with a key signature of one flat and a common time signature. It begins with a whole note D2, followed by a quarter note C2, a quarter note B1, a quarter note A1, a quarter note G2, an eighth note F2, an eighth note E2, a quarter note D2, a quarter note C2, a quarter note B1, and a quarter note A1. The staff concludes with a double bar line.

Gm A Dm

The fourth staff of music is in bass clef with a key signature of one flat and a common time signature. It starts with a whole rest, followed by a quarter rest, then a quarter note G2, an eighth note F2, an eighth note E2, a quarter note D2, a quarter note C2, a quarter note B1, and a quarter note A1. The staff concludes with a double bar line.

ROCK DOWN

En specialversion för GlasSpråkarna, stjärnorna i Valentuna

(= trombonstämman med ackord)

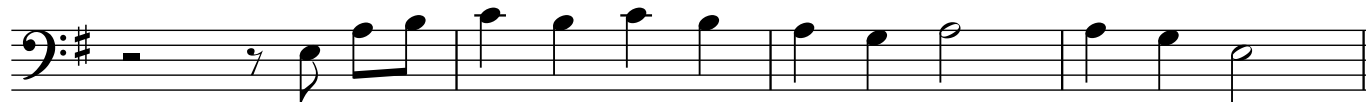
Jan Utbult (arr Dicken Hedrenius)

Em



The first staff of music is in bass clef with a key signature of one sharp (F#) and a common time signature (C). It begins with a whole rest, followed by a quarter rest, then a quarter note G2, an eighth note A2, a quarter note B2, a quarter note C3, a quarter note D3, a quarter note E3, and a quarter note F#3.

Am B Em




The second staff continues the melody. It starts with a whole rest, followed by a quarter rest, then a quarter note G2, an eighth note A2, a quarter note B2, a quarter note C3, a quarter note D3, a quarter note E3, a quarter note F#3, a quarter note G3, a quarter note A3, and a quarter note B3.

Em



The third staff begins with a whole note chord Em, followed by a quarter rest, then a quarter note G2, an eighth note A2, a quarter note B2, a quarter note C3, a quarter note D3, a quarter note E3, a quarter note F#3, a quarter note G3, a quarter note A3, and a quarter note B3.

Am B Em



The fourth staff continues the melody. It starts with a whole rest, followed by a quarter rest, then a quarter note G2, an eighth note A2, a quarter note B2, a quarter note C3, a quarter note D3, a quarter note E3, a quarter note F#3, a quarter note G3, a quarter note A3, and a quarter note B3. The staff ends with a double bar line.