

OLD BRAZIL

Jan Utbult (arr Dicken Hedrenius)

Specialversion GlasSpräckarna

A

C Dm G7 Dm G7 Dm G7 Dm G7 C Dm7 G7

Melodi

Blockflöjt

Blockflöjt x

Tvärflöjt

Tvärflöjt x

Klarinett

Klarinett x

Altsaxofon

Altsaxofon x

Trumpet 1

Trumpet 1 x

Trumpet 2

Trumpet 2 x

Trombon

Trombon x

Tuba i C på Dickens vis

Tuba i Eb på Dickens vis

Tuba i F på Dickens vis

G G G A A A B B B C C C C B B C C C D C C C B B B C C C D B G

G G G A A A B B B C A A A B B B C C C D A A A B B B C C C D B G

A A A A A A A A A A B B B B B B B B B B B B B B A A

C Dm G7 Dm G7 Dm G7 Dm G7 C Dm7 G7

G Am D7 Am D7 Am D7 Am D7 G Am7 D7

F Gm C7 Gm C7 Gm C7 Gm C7 F Gm7 C7

B

Mel *C* *Dm G7 Dm G7 Dm7 A(add9)/C# Dm7 G7 C Fm7 Bb7*

Blfl *B*

Blfl x *G G G A A A B B B C C C C B B B C C C D C C C B B B C C C D C*

Tvfl *G G G A A A B B B C A A A B B B C C C D A A A B B B C C C D C*

Tvfl x *G G G A A A B B B C A A A B B B C C C D A A A B B B C C C D C*

Klar *A A A A A A A A A A B B B B B B B B B B B B B B A*

Klar x *A A A A A A A A A A B B B B B B B B B B B B B B A*

Alt

Alt x

Trp 1 *C D E F# G A B C# E F# G A A G F# F D E*

Trp 1 x *p*

Trp 2 *A B C# D E F# G A D C# D C# C# D E D Bb C*

Trp 2 x *p*

Trb *4 2 4 4 3 4 2 4 1 5 4 4 2 4 6 1 1 1*

Trb x *p*

Tu spec C *C Dm G7 Dm G7 Dm7 A(add9)/C# Dm7 G7 C Fm7 Bb7*

Tu specEb *G Am D7 Am D7 Am7 E(add9)/G# Am7 D7 G Cm7 F7*

Tu spec F *F Gm C7 Gm C7 Gm7 D(add9)/F# Gm7 C7 F Bbm7 Eb7*

C

Mel E_b Fm B b^7 Fm B b^7 Fm B b^7 Fm B b^7 E_b Fm 7 B 7

Bfl **C**

Bfl x

Tvfl

Tvfl x

Klar

Klar x

Alt

Alt x

D D D C C C D D D C Eb Eb Eb D D D Eb Eb Eb D D D Eb Eb Eb D D D

C C C D D D E E E F D D D E E E F F F G D D D E E E F F F G E C

Trp 1 *mp*

Trp 1 x *mp*

Trp 2 *mp*

Trp 2 x *mp*

Trb *mp*

Trb x *mp*

Tu spec C

Tu spec Eb

Tu spec F

1 1 1 6 6 6 4 4 4 3 6 6 6 4 4 4 3 3 3 1 6 6 6 4 4 4 3 3 3 1 4 1

E_b B b E_b Fm B b^7 Fm B b^7 Fm B b^7 Fm B b^7 E_b Fm 7 B 7

Cm F 7 Cm F 7 Cm F 7 Cm F 7 B b Cm 7 F \sharp^7

A b B b m E b^7 B b m E b^7 B b m E b^7 B b m E b^7 A b B b m 7 E 7

D

E \flat

Fm

B \flat 7

Fm

B \flat 7

Fm

B \flat 7

Fm

B \flat 7

E \flat

Mel

Bfl

D

Bfl x

G G G G G G

G G G G

F F F F F F

F F F F

F F F F F F

F F F F

G

Tvfl

Tvfl x

D D D C C C

D D D C

E \flat E \flat E \flat D D D

E \flat E \flat E \flat D

E \flat E \flat E \flat D D D

E \flat E \flat E \flat D

D

Klar

Klar x

C C C D D D

E E E F

D D D E E E

F F F G

D D D E E E

F F F G

F

Alt

Alt x

Trp 1

mp

C B \flat A G F E

D C B \flat A

D C B \flat A G F

E D C B \flat

G A B \flat C D E

F G A B \flat

A

Trp 1 x

mp

Trp 2

mf

C C C D D D

E E E F

D D D E E E

F F F G

D D D E E E

F F F G

F

Trp 2 x

mf

Trb

mf

1 1 1 6 6 6

4 4 4 3

6 6 6 4 4 4

3 3 3 1

6 6 6 4 4 4

3 3 3 1

3

Trb x

mf

E \flat

Fm B \flat 7

Fm B \flat 7

Fm B \flat 7

Fm B \flat 7

E \flat

Tu spec C

B \flat

Cm F7

Cm F7

Cm F7

Cm F7

B \flat

Tu spec E \flat

A \flat

B \flat m E \flat 7

B \flat m E \flat 7

B \flat m E \flat 7

B \flat m E \flat 7

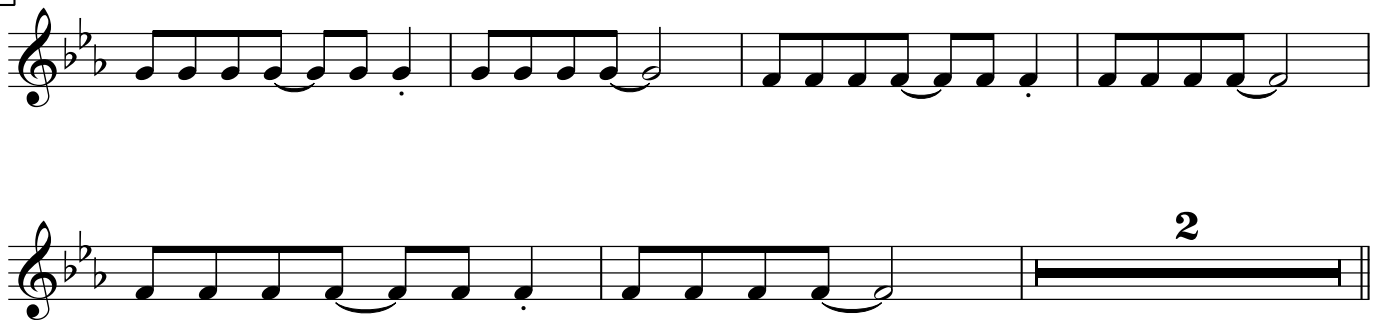
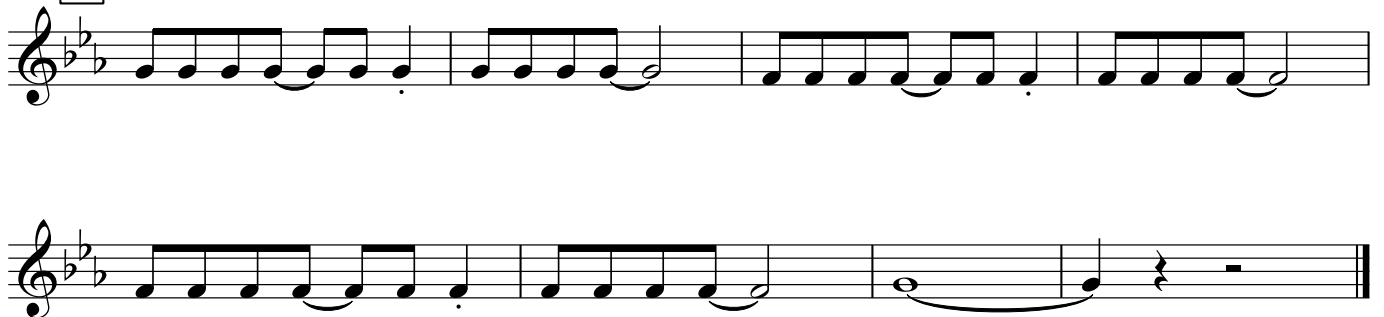
A \flat

Tu spec F

OLD BRAZIL

Specialversion GlasSpräckarna

Jan Utbult (arr Dicken Hedrenius)

A**B****C****D**

OLD BRAZIL

Specialversion GlasSpräckarna

Jan Utbult (arr Dicken Hedrenius)

A G G G A A A B B B C C C C B B B C C C D



C C C B B B C C C D B G



B G G G A A A B B B C C C C B B B C C C D



C C C B B B C C C D C



C G G G G G G G G G G F F F F F F F F F F



F F F F F F F F F F



D G G G G G G G G G G F F F F F F F F F F



F F F F F F F F F F G



2

OLD BRAZIL

Specialversion GlasSpräckarna

Jan Utbult (arr Dicken Hedrenius)

A

Section A consists of two staves of music in C major and common time. The first staff contains four measures of music, and the second staff contains four measures, ending with a double bar line.

B

Section B consists of two staves of music in C major and common time. The first staff contains four measures of music, and the second staff contains four measures, ending with a double bar line and a key signature change to B-flat major.

C

Section C consists of two staves of music in B-flat major and common time. The first staff contains four measures of music, and the second staff contains four measures, ending with a double bar line and a fermata over the final note.

D

Section D consists of two staves of music in B-flat major and common time. The first staff contains four measures of music, and the second staff contains four measures, ending with a double bar line and a fermata over the final note.

OLD BRAZIL

Specialversion GlasSpräckarna

Jan Utbult (arr Dicken Hedrenius)

A G G G A A A B B B C A A A B B B C C C D

A A A B B B C C C D B G

B G G G A A A B B B C A A A B B B C C C D

A A A B B B C C C D C

C D D D C C C D D D C Eb Eb Eb D D D Eb Eb Eb D

Eb Eb Eb D D D Eb Eb Eb D

D D D D C C C D D D C Eb Eb Eb D D D Eb Eb Eb D

Eb Eb Eb D D D Eb Eb Eb D D

OLD BRAZIL

Specialversion GlasSpräckarna

Jan Utbult (arr Dicken Hedrenius)

A

Section A consists of two staves of music. The first staff contains measures 1 through 4, featuring a rhythmic pattern of eighth notes in a treble clef with a key signature of one sharp (F#) and a common time signature (C). The second staff continues with measures 5 through 8, ending with a double bar line.

B

Section B consists of two staves of music. The first staff contains measures 1 through 4, featuring a rhythmic pattern of eighth notes in a treble clef with a key signature of two sharps (F# and C#) and a common time signature (C). The second staff continues with measures 5 through 8, ending with a double bar line.

C

Section C consists of two staves of music. The first staff contains measures 1 through 4, featuring a rhythmic pattern of eighth notes in a treble clef with a key signature of one flat (Bb) and a common time signature (C). The second staff continues with measures 5 through 8, ending with a double bar line.

D

Section D consists of two staves of music. The first staff contains measures 1 through 4, featuring a rhythmic pattern of eighth notes in a treble clef with a key signature of one flat (Bb) and a common time signature (C). The second staff continues with measures 5 through 8, ending with a double bar line.

OLD BRAZIL

Specialversion GlasSpräckarna

Jan Utbult (arr Dicken Hedrenius)

A A A A A A A A A A A B B B B B B B B B B B

B B B B B B B B B B A A

B A A A A A A A A A A B B B B B B B B B B B

B B B B B B B B B B A

C C C C D D D E E E F D D D E E E F F F G

D D D E E E F F F G E C

D C C C D D D E E E F D D D E E E F F F G

D D D E E E F F F G F

OLD BRAZIL

Specialversion GlasSpräckarna

Jan Utbult (arr Dicken Hedrenius)

A



8

B



p

C



mp

D



mp

OLD BRAZIL

Specialversion GlasSpräckarna

Jan Utbult (arr Dicken Hedrenius)

A

8

B C D E F# G A B C#

p

E F# G A A G F# F D E

C C C C D D D E E E F D D D E E E F F F G

mp

D D D E E E F F F G E C

D C Bb A G F E D C Bb A D C Bb A G F E D C Bb

mp

G A Bb C D E F G A Bb A

OLD BRAZIL

Specialversion GlasSpräckarna

Jan Utbult (arr Dicken Hedrenius)

A

8

B

p

C

mp

D

mf

OLD BRAZIL

Specialversion GlasSpräckarna

Jan Utbult (arr Dicken Hedrenius)

A

8

B

A B C# D E F# G A

p

D C# D C# C# D E D Bb C

C

C C C D D D E E E F D D D E E E F F F G

mp

D D D E E E F F F G E C

D

C C C D D D E E E F D D D E E E F F F G

mf

D D D E E E F F F G F

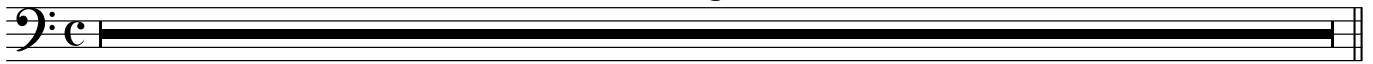
OLD BRAZIL

Specialversion GlasSpräckarna

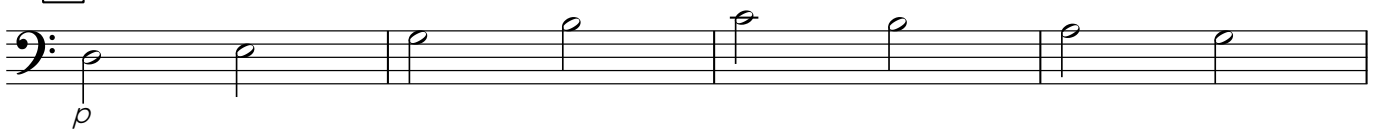
Jan Utbult (arr Dicken Hedrenius)

A

8



B



C



D



OLD BRAZIL

Specialversion GlasSpräckarna

Jan Utbult (arr Dicken Hedrenius)

A 8

B 4 2 4 4 3 4 2 4

p

1 5 4 4 2 4 6 1 1 1

C 1 1 1 6 6 6 4 4 4 3 6 6 6 4 4 4 3 3 3 1

mp

6 6 6 4 4 4 3 3 3 1 4 1

D 1 1 1 6 6 6 4 4 4 3 6 6 6 4 4 4 3 3 3 1

mf

6 6 6 4 4 4 3 3 3 1 3

OLD BRAZIL

Specialversion GlasSpräckarna

Jan Utbult (arr Dicken Hedrenius)

A

C Dm G⁷ Dm G⁷

Dm G⁷ Dm G⁷ C Dm⁷ G⁷

B

C Dm G⁷ Dm G⁷

Dm⁷ A(add9)/C# Dm⁷ G⁷ C Fm⁷ B^{b7}

C

E^b Fm B^{b7} Fm B^{b7}

Fm B^{b7} Fm B^{b7} E^b Fm⁷ B⁷

D

E^b Fm B^{b7} Fm B^{b7}

Fm B^{b7} Fm B^{b7} E^b

OLD BRAZIL

Specialversion GlasSpräckarna

Jan Utbult (arr Dicken Hedrenius)

A

F Gm C7 Gm C7

Gm C7 Gm C7 F Gm7 C7

Section A, first system: Bass clef, C major key signature, common time. The first staff contains four measures of music. Above the staff are the chords F, Gm, C7, Gm, and C7. The notes are: F2, G2, A2, B2, C3, D3, E3, F3.

Section A, second system: Bass clef, C major key signature, common time. The second staff contains four measures of music. Above the staff are the chords Gm, C7, Gm, C7, F, Gm7, and C7. The notes are: G2, A2, B2, C3, D3, E3, F3, G3.

B

F Gm C7 Gm C7

Gm7 D(add9)/F# Gm7 C7 F Bbm7 Eb7

Section B, first system: Bass clef, C major key signature, common time. The first staff contains four measures of music. Above the staff are the chords F, Gm, C7, Gm, and C7. The notes are: F2, G2, A2, B2, C3, D3, E3, F3.

Section B, second system: Bass clef, C major key signature, common time. The second staff contains four measures of music. Above the staff are the chords Gm7, D(add9)/F#, Gm7, C7, F, Bbm7, and Eb7. The notes are: G2, A2, B2, C3, D3, E3, F3, G3.

C

Ab Bbm Eb7 Bbm Eb7

Bbm Eb7 Bbm Eb7 Ab Bbm7 E7

Section C, first system: Bass clef, Bb major key signature, common time. The first staff contains four measures of music. Above the staff are the chords Ab, Bbm, Eb7, Bbm, and Eb7. The notes are: Ab2, Bb2, C3, D3, Eb3, F3, G3, Ab3.

Section C, second system: Bass clef, Bb major key signature, common time. The second staff contains four measures of music. Above the staff are the chords Bbm, Eb7, Bbm, Eb7, Ab, Bbm7, and E7. The notes are: Bb2, C3, D3, Eb3, F3, G3, Ab3.

D

Ab Bbm Eb7 Bbm Eb7

Bbm Eb7 Bbm Eb7 Ab

Section D, first system: Bass clef, Bb major key signature, common time. The first staff contains four measures of music. Above the staff are the chords Ab, Bbm, Eb7, Bbm, and Eb7. The notes are: Ab2, Bb2, C3, D3, Eb3, F3, G3, Ab3.

Section D, second system: Bass clef, Bb major key signature, common time. The second staff contains four measures of music. Above the staff are the chords Bbm, Eb7, Bbm, Eb7, and Ab. The notes are: Bb2, C3, D3, Eb3, F3, G3, Ab3.

OLD BRAZIL

Specialversion GlasSpräckarna

Jan Utbult (arr Dicken Hedrenius)

A

G Am D7 Am D7

Am D7 Am D7 G Am7 D7

B

G Am D7 Am D7

Am7 E(add9)/G# Am7 D7 G Cm7 F7

C

Bb Cm F7 Cm F7

Cm F7 Cm F7 Bb Cm7 F#7

D

Bb Cm F7 Cm F7

Cm F7 Cm F7 Bb