

En kommentar kanske?

# LISBETH LATIN

Jan Utbult (arr Dicken Hedrenius)

Specialversion GlasSpräckarna

Melodi

Blockflöjt

Blockflöjt x

Tvärflöjt

Tvärflöjt x

Klarinett

Klarinett x

Altsaxofon

Altsaxofon x

Trumpet 1

Trumpet 1 x

Trumpet 2

Trumpet 2 x

Trombon

Trombon x

Tuba i C på Dickens vis

Tuba i F på Dickens vis

Tuba i Eb på Dickens vis

B $\flat$ maj7 B $^{\circ}$  Cm $^7$  Cm $^7$  F $^7$

A A A A A A A A B B B B B B C C C C C C C C G E A A

D Eb F D Eb F D F D Eb F D Eb F D F Eb F G Eb F G Eb G Eb F G A B $\flat$  C F D Eb

C D E E E E E E C D E E E E E E D E F F F F F F D E F F F F F C D

1 4 2 1 4 2 1 2 1 4 3 1 4 3 1 3 4 2 1 4 2 1 4 1 4 2 1 2 4 1 3 1 4

B $\flat$ maj7 B $^{\circ}$  Cm $^7$  Cm $^7$  F $^7$

E $\flat$ maj7 E $^{\circ}$  Fm $^7$  Fm $^7$  B $\flat$  $^7$

Fmaj7 F $^{\circ}$  Gm $^7$  Gm $^7$  C $^7$

**Chord Symbols:**  
B $\flat$ maj7    B $\circ$     Cm7    C $\sharp$  $\circ$     B $\flat$ /D    C $\sharp$ m9    Cm9    F7    B $\flat$

**Chord Symbols (Lower Section):**  
B $\flat$ maj7    B $\circ$     Cm7    C $\sharp$  $\circ$     B $\flat$ /D    C $\sharp$ m9    Cm9    F7    B $\flat$   
E $\flat$ maj7    E $\circ$     Fm7    F $\sharp$  $\circ$     E $\flat$ /G    F $\sharp$ m9    Fm9    B $\flat$ 7    E $\flat$   
Fmaj7    F $\sharp$  $\circ$     Gm7    G $\sharp$  $\circ$     F/A    G $\sharp$ m9    Gm9    C7    F

**Trb Fingerings:**  
2 1 4    2 1 2    1 4    3 1 4    3 1 3    4 2    1 5    4 2    3 3 6 1 1



Blockflöjt x

# LISBETH LATIN

Specialversion GlasSpräckarna.

Jan Utbult (arr Dicken Hedrenius)

A A A A A A A A B B B B B B B B

C C C C C C C C C C G E A A

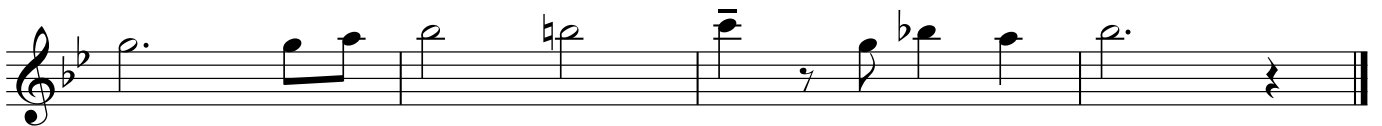
A A A A A A A A B B B B B B B B

C C C D B C G G G G

# LISBETH LATIN

Specialversion GlasSpräckarna.

Jan Utbult (arr Dicken Hedrenius)



# LISBETH LATIN

Specialversion GlasSpräckarna.

Jan Utbult (arr Dicken Hedrenius)

D Eb F D Eb F D F D Eb F D Eb F D F Eb F

The first line of music consists of two measures. The first measure contains a half note G4 with a chord of D Eb F above it. The second measure contains a half note A4 with a chord of D Eb F above it. The third measure contains a half note Bb4 with a chord of D F above it. The fourth measure contains a half note C5 with a chord of D Eb F above it. The fifth measure contains a half note Bb4 with a chord of D Eb F above it. The sixth measure contains a half note A4 with a chord of D F above it. The seventh measure contains a half note G4 with a chord of D F above it. The eighth measure contains a half note F4 with a chord of Eb F above it. The piece ends with a double bar line.

G Eb F G Eb G Eb F G A Bb C F D Eb

The second line of music consists of two measures. The first measure contains a half note G4 with a chord of G above it. The second measure contains a half note A4 with a chord of Eb F above it. The third measure contains a half note Bb4 with a chord of G Eb G above it. The fourth measure contains a half note C5 with a chord of Eb F G above it. The fifth measure contains a half note Bb4 with a chord of A Bb C above it. The sixth measure contains a half note A4 with a chord of F above it. The seventh measure contains a half note G4 with a chord of D Eb above it. The piece ends with a double bar line.

F D Eb F D F D Eb F D Eb F D F Eb F

The third line of music consists of two measures. The first measure contains a half note F4 with a chord of F above it. The second measure contains a half note G4 with a chord of D Eb F above it. The third measure contains a half note A4 with a chord of D F above it. The fourth measure contains a half note Bb4 with a chord of D Eb F above it. The fifth measure contains a half note C5 with a chord of D Eb F above it. The sixth measure contains a half note Bb4 with a chord of D Eb F above it. The seventh measure contains a half note A4 with a chord of D F above it. The eighth measure contains a half note G4 with a chord of Eb F above it. The piece ends with a double bar line.

G G A Bb B C G Bb A Bb

The fourth line of music consists of two measures. The first measure contains a half note G4 with a chord of G above it. The second measure contains a half note A4 with a chord of G A Bb above it. The third measure contains a half note Bb4 with a chord of B above it. The fourth measure contains a half note C5 with a chord of C above it. The fifth measure contains a half note Bb4 with a chord of G Bb A Bb above it. The sixth measure contains a half note A4 with a chord of Bb above it. The seventh measure contains a half note G4 with a chord of Bb above it. The piece ends with a double bar line.



# LISBETH LATIN

Specialversion GlasSpräckarna.

Jan Utbult (arr Dicken Hedrenius)

C D E E E E E E C D E E E E E E D E




F F F F F F D E F F F F F C D



E E E E E E C D E E E E E E D E



F F" G F E E F F E





# LISBETH LATIN

Specialversion GlasSpräckarna.

Jan Utbult (arr Dicken Hedrenius)



Trumpet 1 x

# LISBETH LATIN

Specialversion GlasSpräckarna.

Jan Utbult (arr Dicken Hedrenius)

E F G E F G E G E F G E F G E G F G

A F G A F A F G A B C D G E F

G E F G E G E F G E F G E G F G

A A BB C C# D G C B C

# LISBETH LATIN

Specialversion GlasSpräckarna.

Jan Utbult (arr Dicken Hedrenius)



Trumpet 2 x

# LISBETH LATIN

Specialversion GlasSpräckarna.

Jan Utbult (arr Dicken Hedrenius)

C D E C D E C E C D E C#D E C#E D E

A musical staff in treble clef with a common time signature. The notes are: C4, D4, E4, C4, D4, E4, C4, E4, C4, D4, E4, C#4, D4, E4, C#4, E4, D4, E4. There are rests after the 4th, 6th, 8th, and 10th notes.

F D E F E F D E F G A B G C D

A musical staff in treble clef with a common time signature. The notes are: F4, D4, E4, F4, E4, F4, D4, E4, F4, G4, A4, B4, G4, C5, D5. There are rests after the 4th, 6th, 8th, and 10th notes.

E C D E C E C D E C#D E C#E D E

A musical staff in treble clef with a common time signature. The notes are: E4, C4, D4, E4, C4, E4, C4, D4, E4, C#4, D4, E4, C#4, E4, D4, E4. There are rests after the 4th, 6th, 8th, and 10th notes.

F F# G G# A A G G E

A musical staff in treble clef with a common time signature. The notes are: F4, F#4, G4, G#4, A4, A4, G4, G4, E4. There is a rest after the 8th note.

Trombon

# LISBETH LATIN

Specialversion GlasSpräckarna.

Jan Utbult (arr Dicken Hedrenius)



Trombon x

# LISBETH LATIN

Specialversion GlasSpräckarna.

Jan Utbult (arr Dicken Hedrenius)

1 4 2 1 4 2 1 2 1 4 3 1 4 3 1 3 4 2

1 4 2 1 4 1 4 2 1 2 4 1 3 1 4

2 1 4 2 1 2 1 4 3 1 4 3 1 3 4 2

1 5 4 2 3 3 6 1 1

# LISBETH LATIN

Specialversion GlasSpräckarna.

Jan Utbult (arr Dicken Hedrenius)

B $\flat$ maj7

B $^{\circ}$



Cm7

Cm7

F7



B $\flat$ maj7

B $^{\circ}$



Cm7

C $\sharp^{\circ}$

B $\flat$ /D

C $\sharp$ m9

Cm9

F7

B $\flat$



Tuba i F på Dickens vis

# LISBETH LATIN

Specialversion GlasSpräckarna.

Jan Utbult (arr Dicken Hedrenius)

E♭maj7 E°

Fm7 Fm7 B♭7

E♭maj7 E°

Fm7 F#° E♭/G F#m9 Fm9 B♭7 E♭



Tuba i Eb på Dickens vis

# LISBETH LATIN

Specialversion GlasSpräckarna.

Jan Utbult (arr Dicken Hedrenius)

Fmaj7 F#°

Musical notation for the first staff, bass clef, common time. The melody consists of eighth notes and quarter notes with rests. Chords Fmaj7 and F#° are indicated above the staff.

Gm7 Gm7 C7

Musical notation for the second staff, bass clef, common time. The melody consists of eighth notes and quarter notes with rests. Chords Gm7 and C7 are indicated above the staff.

Fmaj7 F#°

Musical notation for the third staff, bass clef, common time. The melody consists of eighth notes and quarter notes with rests. Chords Fmaj7 and F#° are indicated above the staff.

Gm7 G#° F/A G#m9 Gm9 C7 F

Musical notation for the fourth staff, bass clef, common time. The melody consists of eighth notes and quarter notes with rests. Chords Gm7, G#°, F/A, G#m9, Gm9, C7, and F are indicated above the staff.