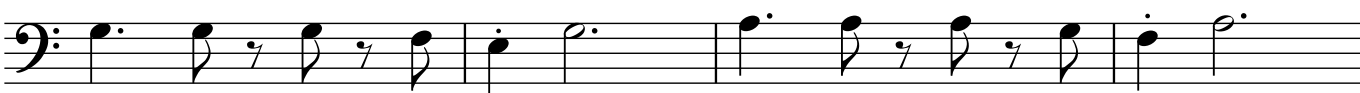
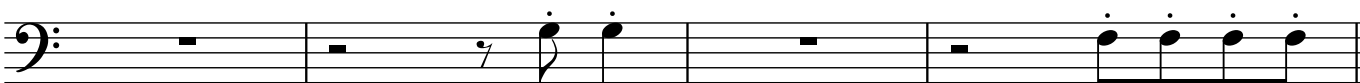
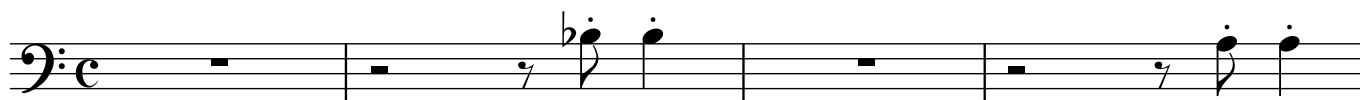


ATTACK

En specialversion för GlasSpråkarna, stjärnorna i Valentuna

Jan Utbult (arr Dicken Hedrenius)



ATTACK

En specialversion för GlasSpråkarna, stjärnorna i Valentuna

Jan Utbult (arr Dicken Hedrenius)

First musical staff in bass clef with common time signature. It contains two measures of music. The first measure has a whole rest. The second measure has a quarter rest followed by two eighth notes: a B-flat and a B natural. Above the notes are fingerings '1' and '1'. The third measure has a whole rest. The fourth measure has a quarter rest followed by two eighth notes: a B natural and a B natural. Above the notes are fingerings '2' and '2'.

Second musical staff in bass clef with common time signature. It contains two measures of music. The first measure has a whole rest. The second measure has a quarter rest followed by two eighth notes: a B natural and a B natural. Above the notes are fingerings '4' and '4'. The third measure has a whole rest. The fourth measure has four eighth notes: B natural, B natural, B natural, B natural. Above the notes are fingerings '1', '1', '1', '1'.

Third musical staff in bass clef with common time signature. It contains four measures of music. The first measure has a dotted quarter note B natural, an eighth rest, a dotted quarter note B natural, an eighth rest, and a dotted quarter note B natural. Above are fingerings '4', '4', '4'. The second measure has a dotted quarter note B natural, a half note B natural, and a dotted quarter note B natural. Above are fingerings '1', '2', '4'. The third measure has a dotted quarter note B natural, an eighth rest, a dotted quarter note B natural, an eighth rest, a dotted quarter note B natural, and a dotted quarter note B natural. Above are fingerings '2', '2', '2'. The fourth measure has a dotted quarter note B natural, a half note B natural, and a dotted quarter note B natural. Above are fingerings '4', '1', '2'.

Fourth musical staff in bass clef with common time signature. It contains four measures of music. The first measure has a dotted quarter note B natural, an eighth rest, a dotted quarter note B natural, an eighth rest, a dotted quarter note B natural, and a dotted quarter note B natural. Above are fingerings '4', '4', '4'. The second measure has a dotted quarter note B natural, a half note B natural, and a dotted quarter note B natural. Above are fingerings '3', '4', '4'. The third measure has a dotted quarter note B natural, a dotted quarter note B natural, a dotted quarter note B natural, and a dotted quarter note B natural. Above are fingerings '1', '1', '1', '1'. The fourth measure has a dotted quarter note B natural, a dotted quarter note B natural, a dotted quarter note B natural, and a dotted quarter note B natural. Above are fingerings '2', '2', '1', '1'. The notes in the final two measures have accents (>).