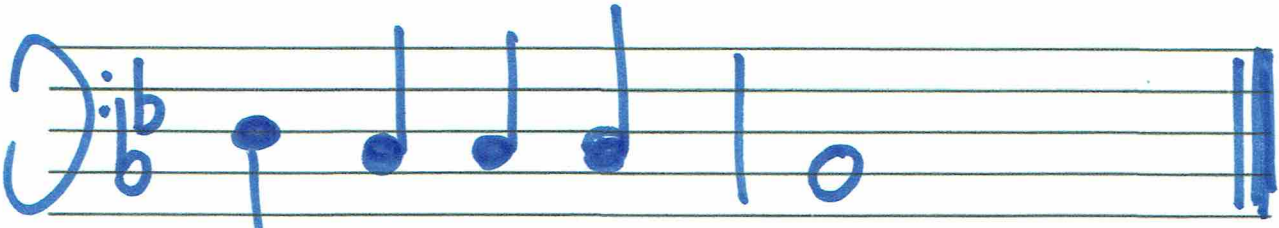
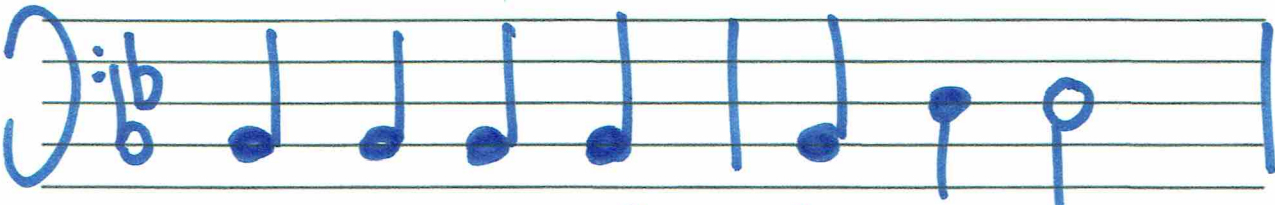
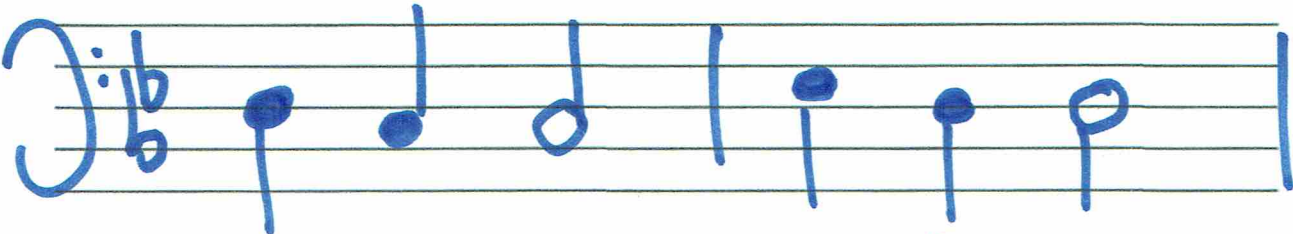
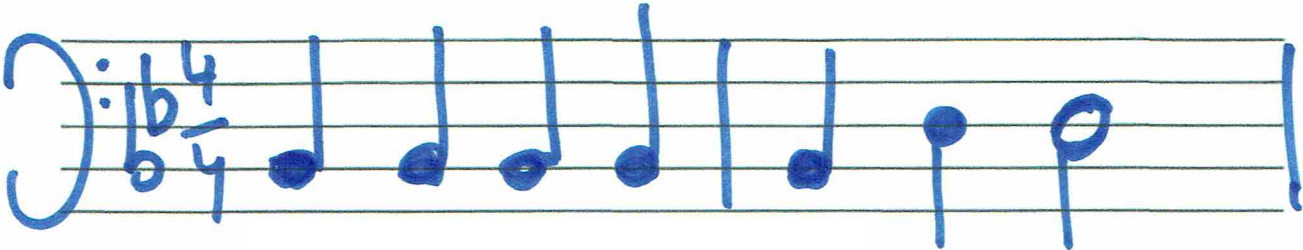


SOM SOLDATER



SOM SOLDATER

Handwritten musical notation for the first staff. It features a bass clef, a key signature of one flat (B-flat), and a 4/4 time signature. The melody consists of four quarter notes in the first measure and a quarter note followed by two half notes in the second measure. The notes are G2, F2, E2, D2, G2, F2, and E2. Below the staff, the chords are labeled in blue: BESS (with a '1' below), BESS (with a '1' below), BESS (with a '1' below), BESS (with a '1' below), BESS (with a '1' below), D (with a '4' below), and D (with a '4' below).

Handwritten musical notation for the second staff. It features a bass clef and a key signature of one flat (B-flat). The melody consists of a quarter note, a quarter note, and a half note in the first measure, and a quarter note, a quarter note, and a half note in the second measure. The notes are G2, F2, E2, G2, F2, and E2. Below the staff, the chords are labeled in blue: D (with a '4' below), C (with a '6' below), C (with a '6' below), Ess (with a '3' below), D (with a '4' below), and D (with a '4' below).

Handwritten musical notation for the third staff. It features a bass clef, a key signature of one flat (B-flat), and a 4/4 time signature. The melody consists of four quarter notes in the first measure and a quarter note followed by two half notes in the second measure. The notes are G2, F2, E2, D2, G2, F2, and E2. Below the staff, the chords are labeled in blue: BESS (with a '1' below), BESS (with a '1' below), BESS (with a '1' below), BESS (with a '1' below), BESS (with a '1' below), D (with a '4' below), and D (with a '4' below).

Handwritten musical notation for the fourth staff. It features a bass clef and a key signature of one flat (B-flat). The melody consists of a quarter note, a quarter note, and a quarter note in the first measure, and a whole note in the second measure. The notes are G2, F2, E2, and G2. Below the staff, the chords are labeled in blue: D (with a '4' below), C (with a '6' below), C (with a '6' below), C (with a '6' below), and BESS (with a '1' below). The staff ends with a double bar line.