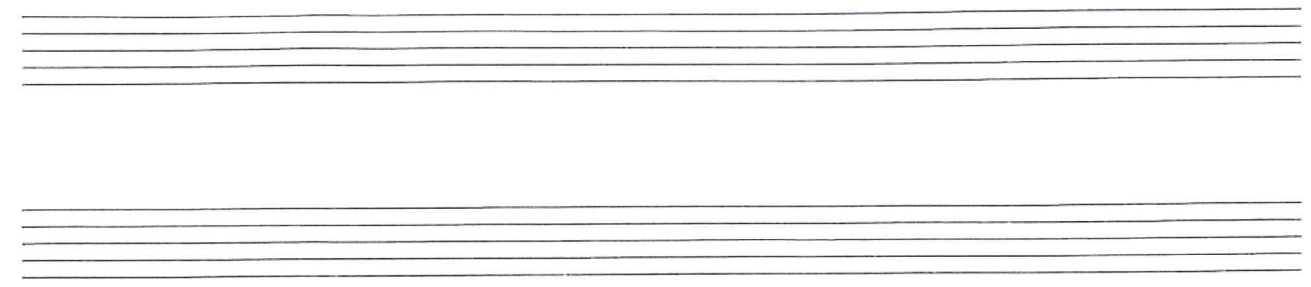
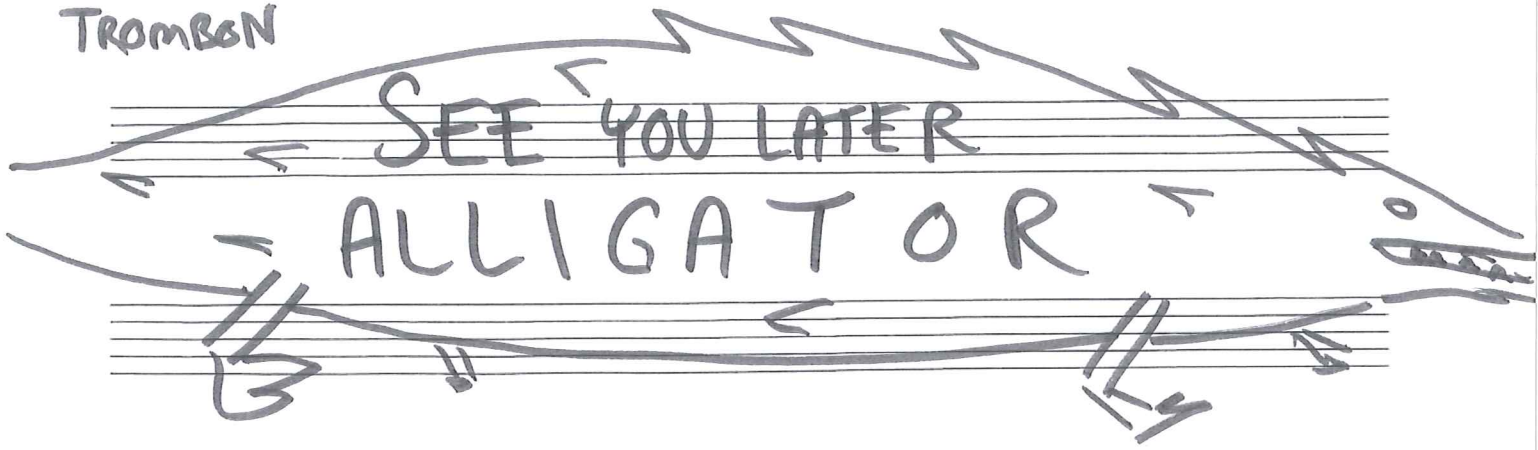
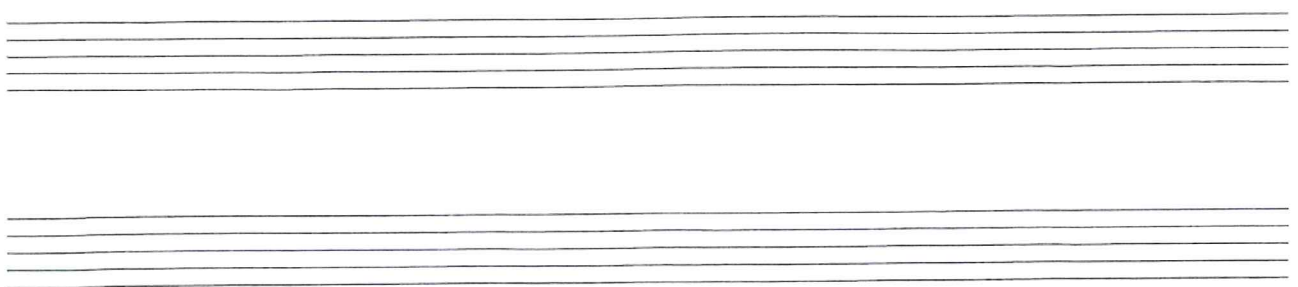


TROMBON

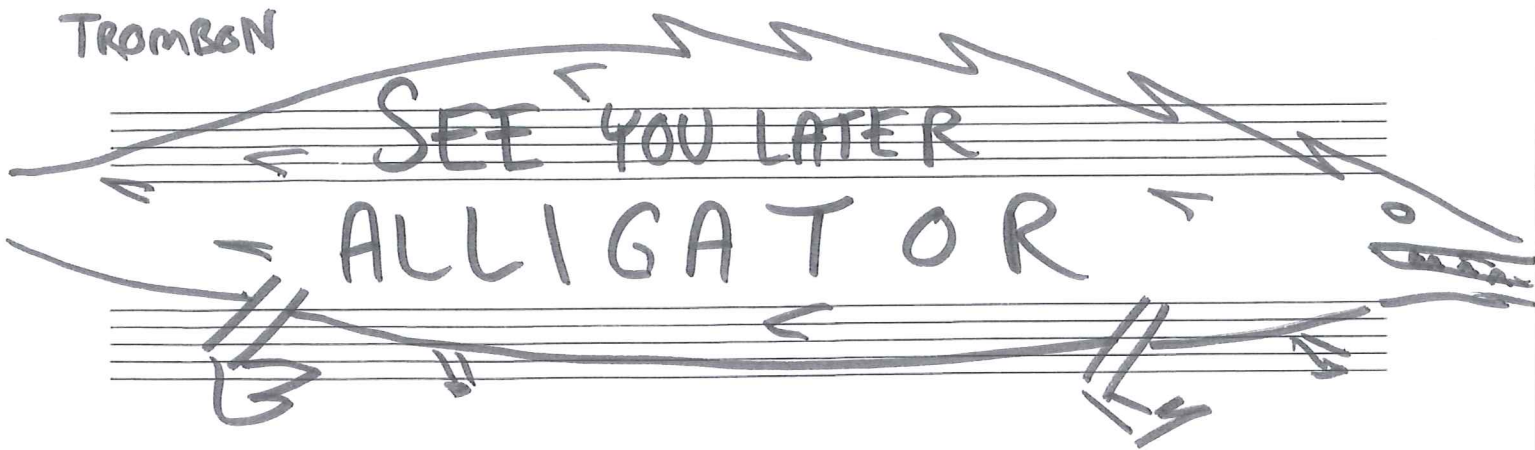


Handwritten musical notation for Trombone in bass clef, 4/4 time, key of B-flat. The first staff has a circled 'A' above a double bar line. The second and third staves continue the melody. The notation includes quarter notes, eighth notes, and rests.

(EJ I SLUTET)



TROMBON



SEE YOU LATER  
ALLIGATOR

Handwritten musical notation for Trombone, featuring four staves with notes, rests, and blue fingering numbers. The notation is in bass clef with a key signature of one flat (Bb) and a 4/4 time signature. The first staff includes a circled 'A' above a red double bar line. The fourth staff is marked with '(EJ 1 SLUTET)' and ends with a red double bar line.

Staff 1: 1 1 1 6 4 2 6 6 | 1 1 1 6 4 2 6

Staff 2: 3 3 3 4 1 4 1 1 | 1 1 1 6 4 2 6

Staff 3: 1 1 1 6 4 2 6 6 | 4 1 1 6 4 1 1

Staff 4: 1 1 1 6 4 2

(EJ 1 SLUTET)