

# Betlehems stjärna

Kanske inte så gräsligt klingande ändå, vid  
närmare eftertanke?

Arr Dicken Hedrenius

Trp 1, blfl + tvfl (8va)

Klar + trp 2

Altsax

Trb opt

Piano opt

C7 SOLOTAKT C7 F Dm Am

trp/fl

kl/tp2

Altsx

Trb opt

Pi opt

Gm Dm A D E7 E7 A Gm A

~~Betlehems stjärna, klingande partitur sida 2 av 2~~ transponerat blandat med klingande (!)

trp/fl  
kl/tp2  
Altsx  
Trb opt  
Pi opt

*Gm* *A* *A7* *D* *D7 SOLOTAKT* *G* *Gm* *D* *Gm* *Ebm/Gb*

Detailed description: This system contains the first six measures of the score. The key signature has one sharp (F#). The first four measures end with a double bar line. The fifth measure is marked 'SOLOTAKT'. The piano part includes chord symbols: Gm, A, A7, D, D7, G, Gm, D, Gm, Ebm/Gb. The woodwind parts (trp/fl, kl/tp2, Altsx, Trb opt) have various rhythmic patterns and rests. The piano part shows chord voicings for both hands.

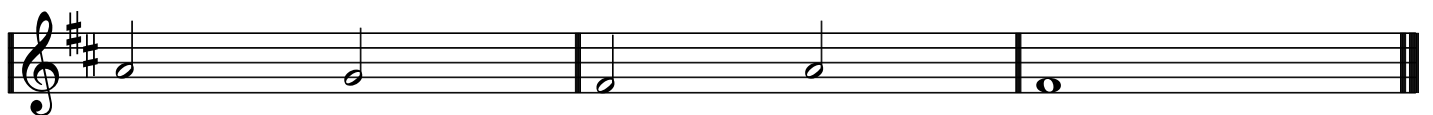
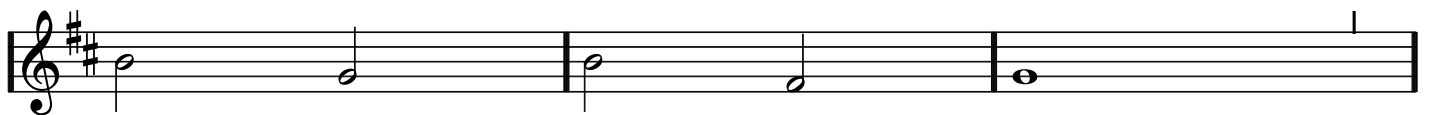
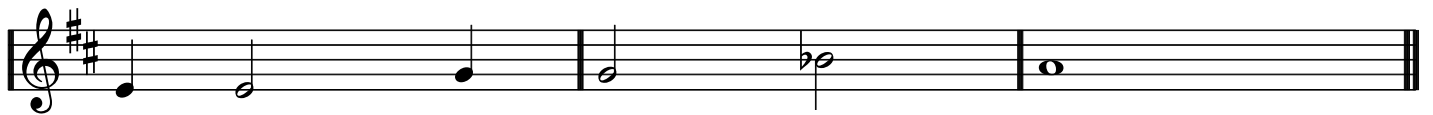
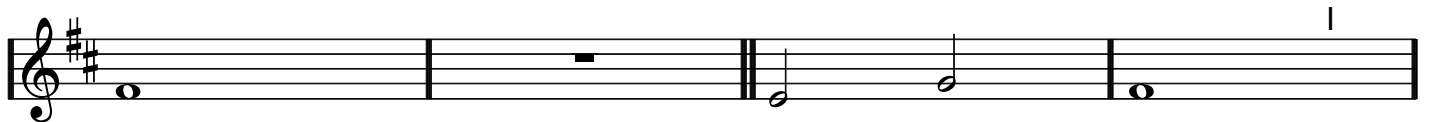
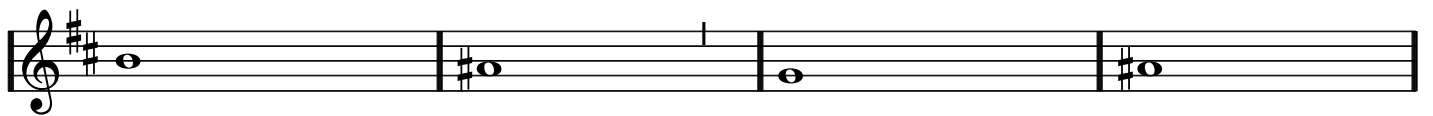
trp/fl  
kl/tp2  
Altsx  
Trb opt  
Pi opt

*Bb/F* *Edim* *F7* *Bb* *Eb* *Bb* *F7* *Bb* *C* *C7* *F* *F*

Detailed description: This system contains the next six measures of the score. The key signature has one sharp (F#). The piano part includes chord symbols: Bb/F, Edim, F7, Bb, Eb, Bb, F7, Bb, C, C7, F, F. The woodwind parts continue with their respective parts. The piano part shows chord voicings for both hands.

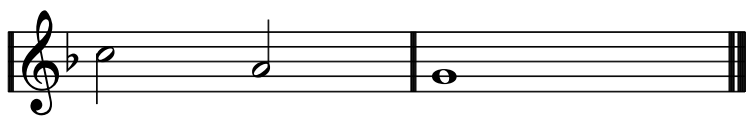
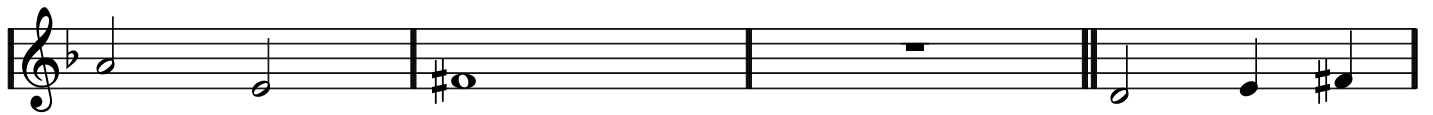
Altsax

# Betlehems stjärna



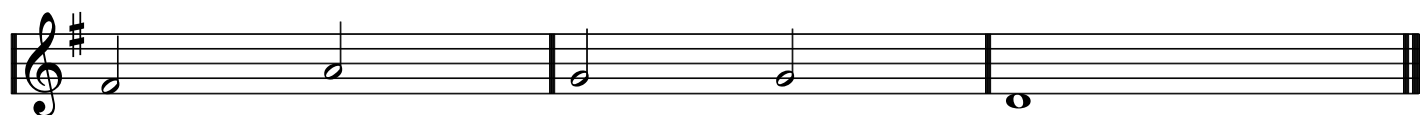
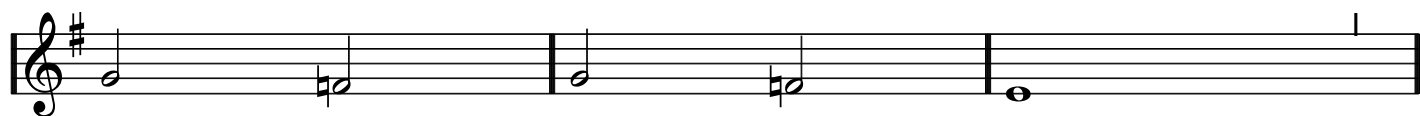
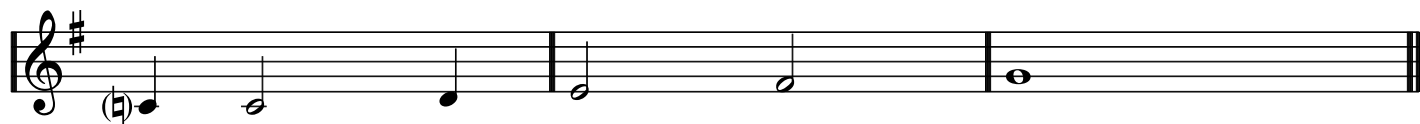
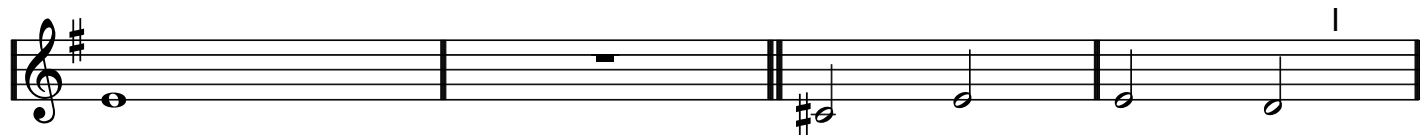
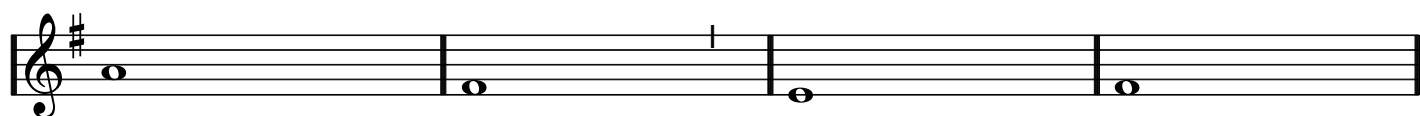
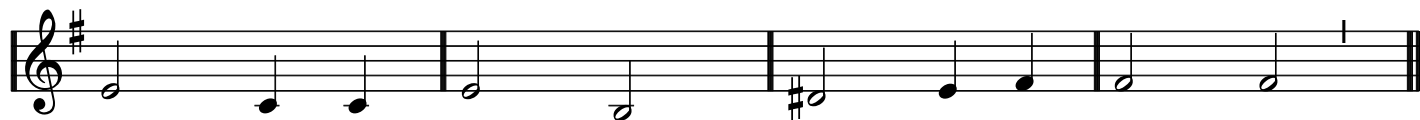
Blockflöjt

# Betlehems stjärna



Klarinett

# Betlehems stjärna



Piano

# Betlehems stjärna

C7 SOLOTAKT C7 F Dm Am

Gm Dm A D E7 E7 A

Gm A Gm A A7

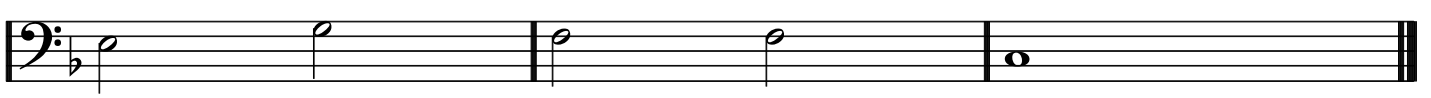
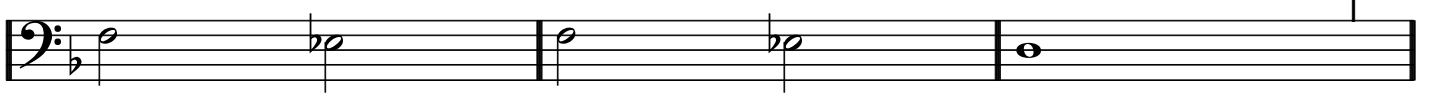
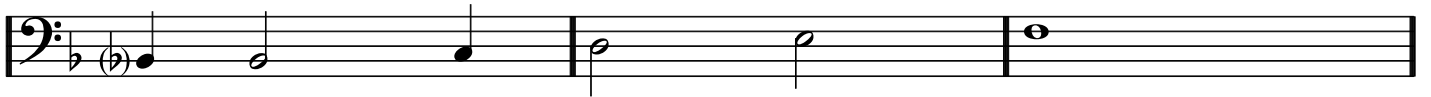
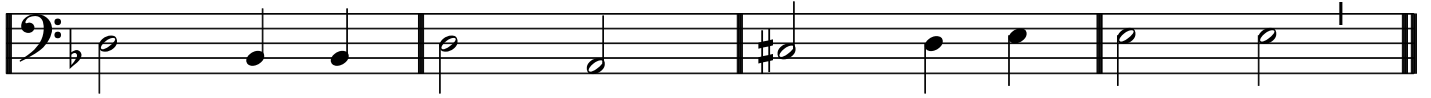
D D7 SOLOTAKT G Gm D

Gm Ebm/Gb Bb/F Edim F7 Bb Eb Bb F7

Bb C C7 F F

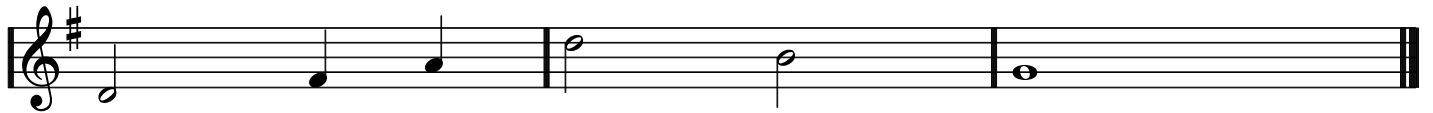
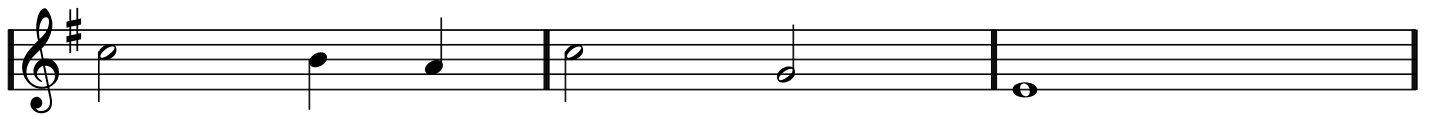
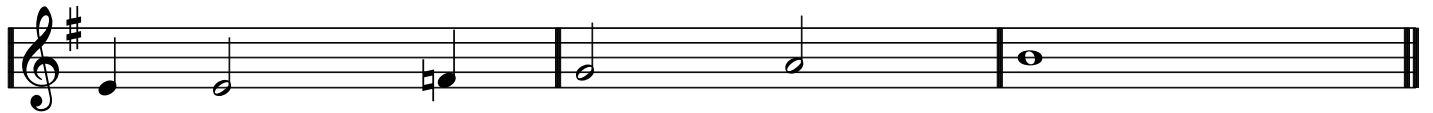
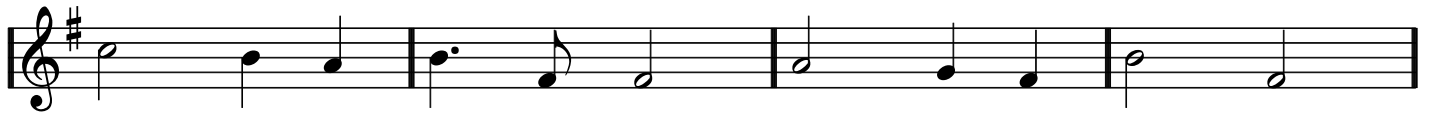
Trombon

# Betlehems stjärna



Trumpet 1

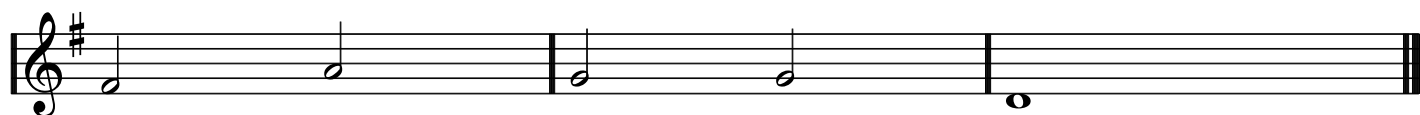
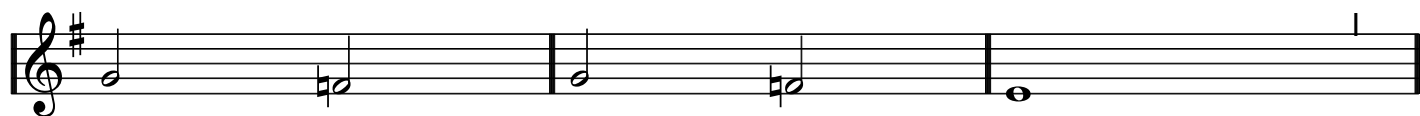
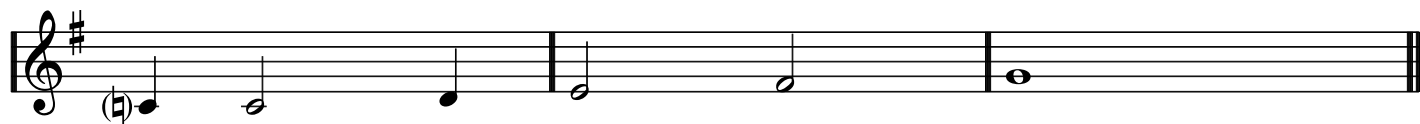
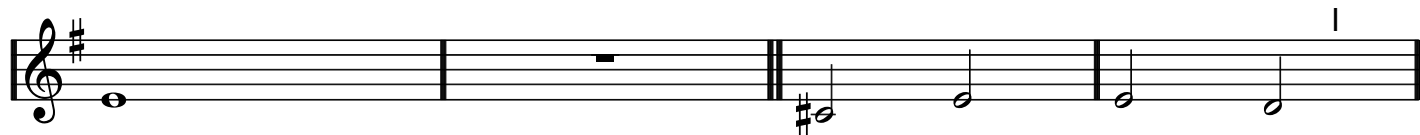
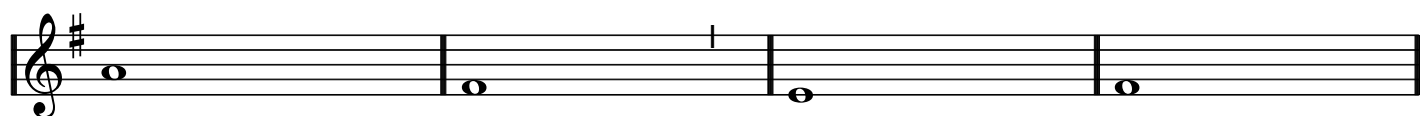
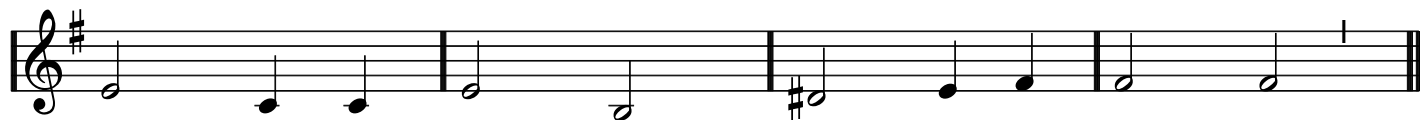
# Betlehems stjärna





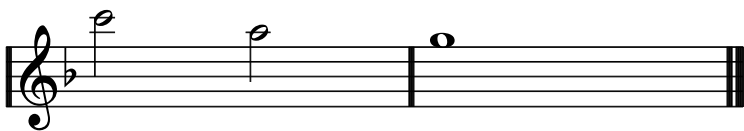
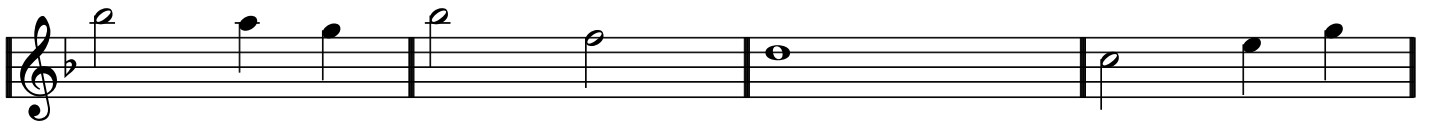
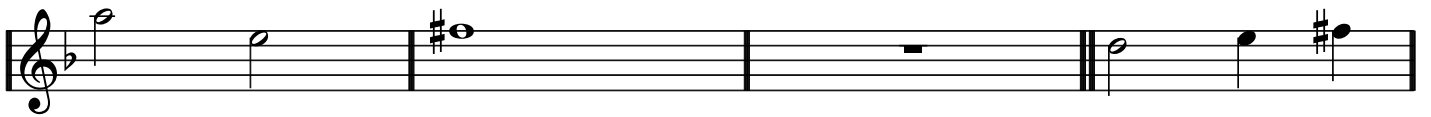
Trumpet 2

# Betlehems stjärna



Tvärflöjt

# Betlehems stjärna



klockspel

# BETLEHEMS STJÄRNA

